

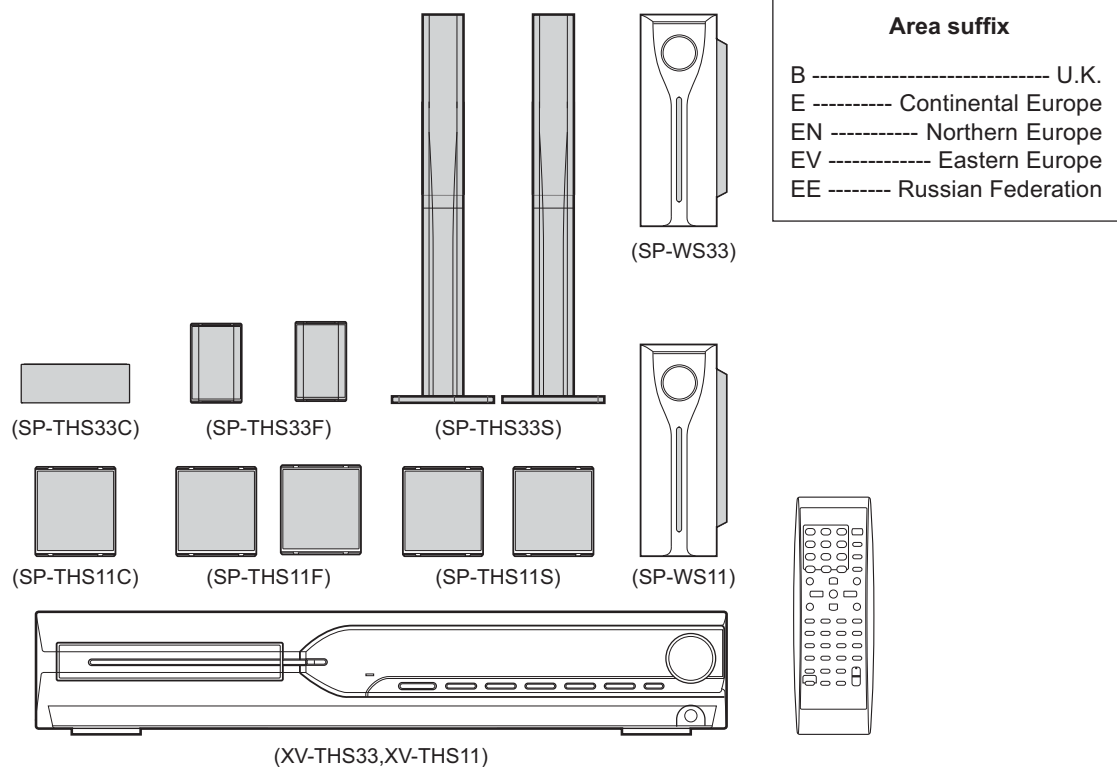
JVC

SCHEMATIC DIAGRAMS

DVD DIGITAL CINEMA SYSTEM

TH-S33, TH-S11

CD-ROM No.SML200505



Lead free solder used in the board (material : Sn-Ag-Cu, melting point : 219 Centigrade)

Contents

Block diagram	2-1
Standard schematic diagrams	2-2
Printed circuit boards	2-11 to 13

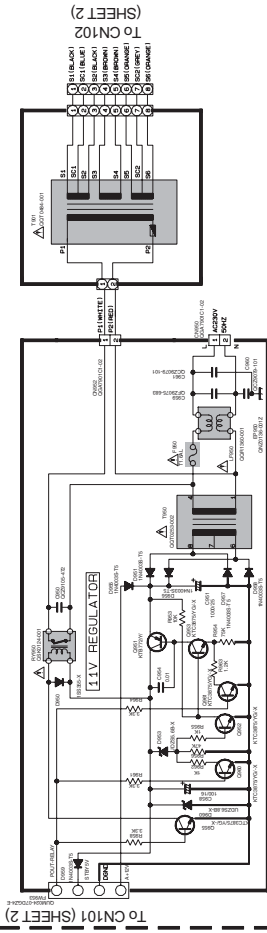
Standard schematic diagrams

Transformer section

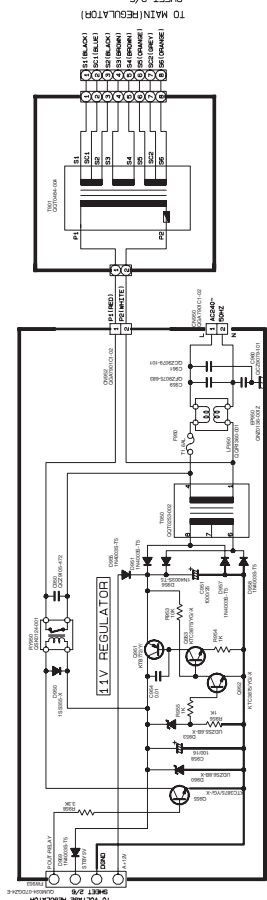
POWER SUPPLY BLOCK

GVA10103-A1

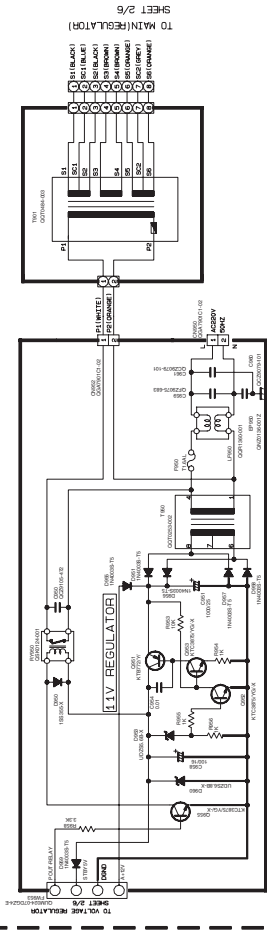
B/E/EN/EV/EE (230V 50Hz)



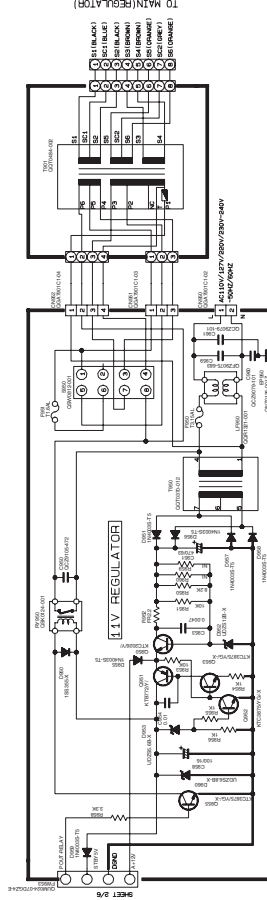
A (240V 50Hz)



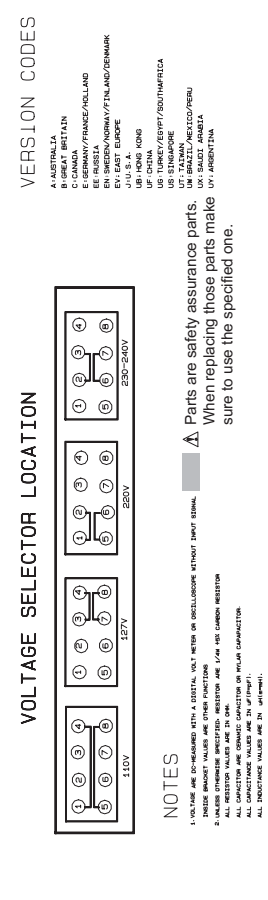
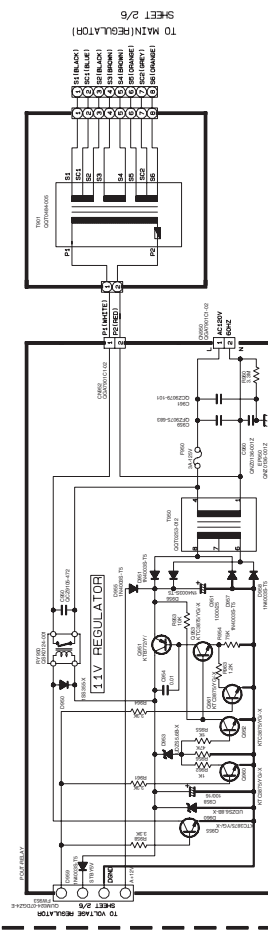
UB/UF/UFC (220V 50Hz)



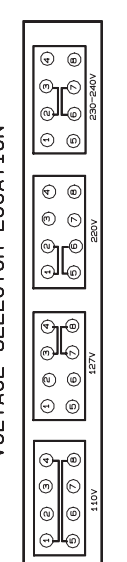
UG/UN/US/UT/UW/UX (110V, 127V, 220V, 230V-240V)



J/C (120V 60Hz)



VOLTAGE SELECTOR LOCATION



VERSION CODES

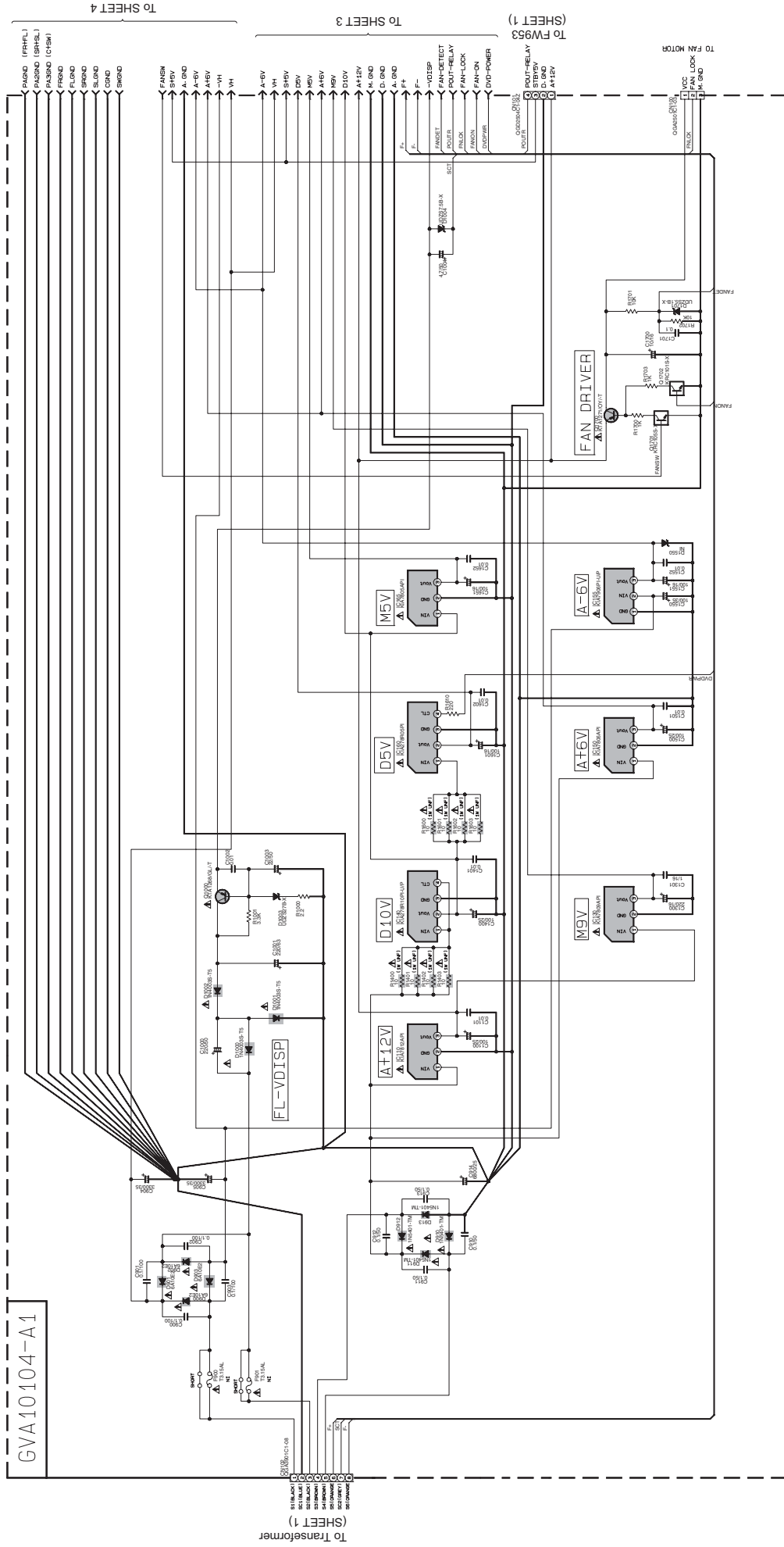
- A AUSTRALIA
- B CANADA
- C CANADA
- E GERMANY/FRANCE/NETHERLANDS
- EN SWEDEN/NORWAY/FINLAND/DENMARK
- EV EAST EUROPE
- UF UNITED KINGDOM
- UB HONG KONG
- US SINGAPORE
- UT JAPAN
- UX SAUDI ARABIA
- UY ARGENTINA

Notes:

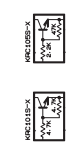
- 1. ALL DIMENSIONS ARE IN MILLIMETERS UNLESS OTHERWISE SPECIFIED.
- 2. ALL DIMENSIONS ARE IN MILLIMETERS UNLESS OTHERWISE SPECIFIED.
- 3. ALL DIMENSIONS ARE IN MILLIMETERS UNLESS OTHERWISE SPECIFIED.
- 4. ALL DIMENSIONS ARE IN MILLIMETERS UNLESS OTHERWISE SPECIFIED.
- 5. ALL DIMENSIONS ARE IN MILLIMETERS UNLESS OTHERWISE SPECIFIED.
- 6. ALL DIMENSIONS ARE IN MILLIMETERS UNLESS OTHERWISE SPECIFIED.
- 7. ALL DIMENSIONS ARE IN MILLIMETERS UNLESS OTHERWISE SPECIFIED.
- 8. ALL DIMENSIONS ARE IN MILLIMETERS UNLESS OTHERWISE SPECIFIED.
- 9. ALL DIMENSIONS ARE IN MILLIMETERS UNLESS OTHERWISE SPECIFIED.
- 10. ALL DIMENSIONS ARE IN MILLIMETERS UNLESS OTHERWISE SPECIFIED.
- 11. ALL DIMENSIONS ARE IN MILLIMETERS UNLESS OTHERWISE SPECIFIED.
- 12. ALL DIMENSIONS ARE IN MILLIMETERS UNLESS OTHERWISE SPECIFIED.

Parts are safety assurance parts. When replacing those parts make sure to use the specified one.

Regulator section

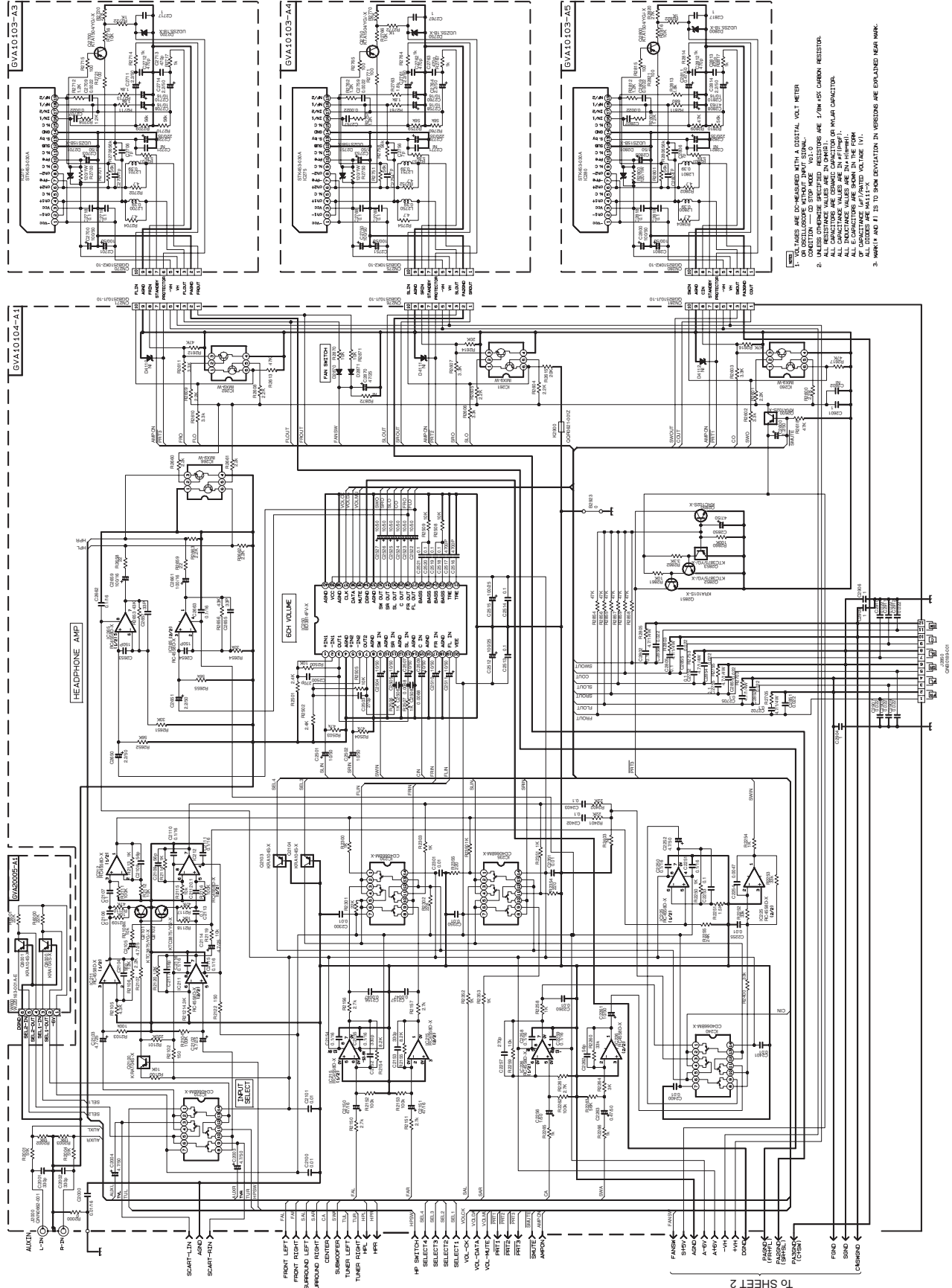


Parts are safety assurance parts. When replacing those parts make sure to use the specified one.



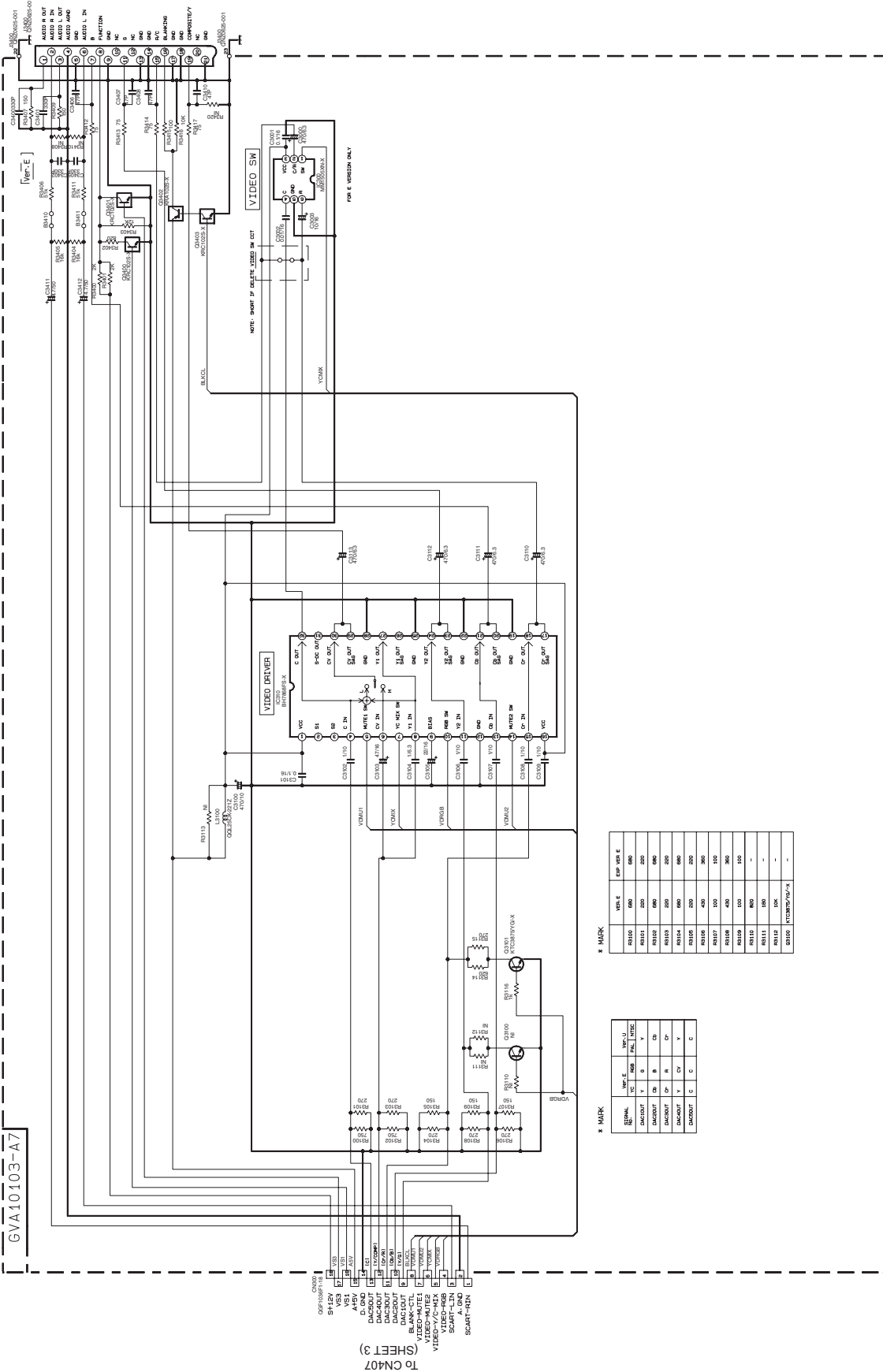
- 1. VOLTAGES ARE DC-MEASURED WITH A DIGITAL VOLT METER USING A 100Ω LOAD. CAPACITANCE VALUES ARE IN μF UNLESS OTHERWISE SPECIFIED.
- 2. UNLESS OTHERWISE SPECIFIED, RESISTORS ARE 1/8W 5% CARBON RESISTOR. ALL RESISTANCE VALUES ARE IN Ω (OHM), ALL CAPACITANCE VALUES ARE IN μF (μF).
- 3. MARK H AND #1 IS TO SHOW ELEVATION IN VERBOSAS ARE EXPLAINED NEAR MARK.

■ Audio section



- NOTE:
1. VOLTAGES ARE MEASURED WITH A DIGITAL VOLT METER. ALL RESISTANCE VALUES ARE IN OHMS UNLESS OTHERWISE SPECIFIED. CAPACITANCE VALUES ARE IN P.F. UNLESS OTHERWISE SPECIFIED.
 2. ALL CAPACITORS ARE CERAMIC CAPACITORS UNLESS OTHERWISE SPECIFIED. ALL INDUCTANCE VALUES ARE IN mH UNLESS OTHERWISE SPECIFIED. ALL CAPACITANCE VALUES ARE IN pF UNLESS OTHERWISE SPECIFIED.
 3. WAXY AND FT 25 IS SPECIFICATION IN WIRING ARE EXPLAINED NEAR MARK.

GVA10103-A7



AV INPUT TERMINALS

FUNCTION	SPEC	IMP	OV
LEVEL 0	0-2V	0V	0V
LEVEL 1	4-5.7V	5.00V	5.50V
LEVEL 2	9.5-15V	10.0V	10.50V

FUNCTION	SPEC	IMP	OV
LEVEL 0	0-2V	0V	0V
LEVEL 1	4-5.7V	5.00V	5.50V
LEVEL 2	9.5-15V	10.0V	10.50V

FUNCTION	SPEC	IMP	OV
LEVEL 0	0-2V	0V	0V
LEVEL 1	4-5.7V	5.00V	5.50V
LEVEL 2	9.5-15V	10.0V	10.50V

* MARK

RESISTOR	VALUE	STOP VALUE
R100	600	600
R101	200	200
R102	600	600
R103	200	200
R104	600	600
R105	200	200
R106	400	300
R107	400	300
R108	400	300
R109	100	100
R110	800	-
R112	10K	-
R113	10K/20K/50K	-

* MARK

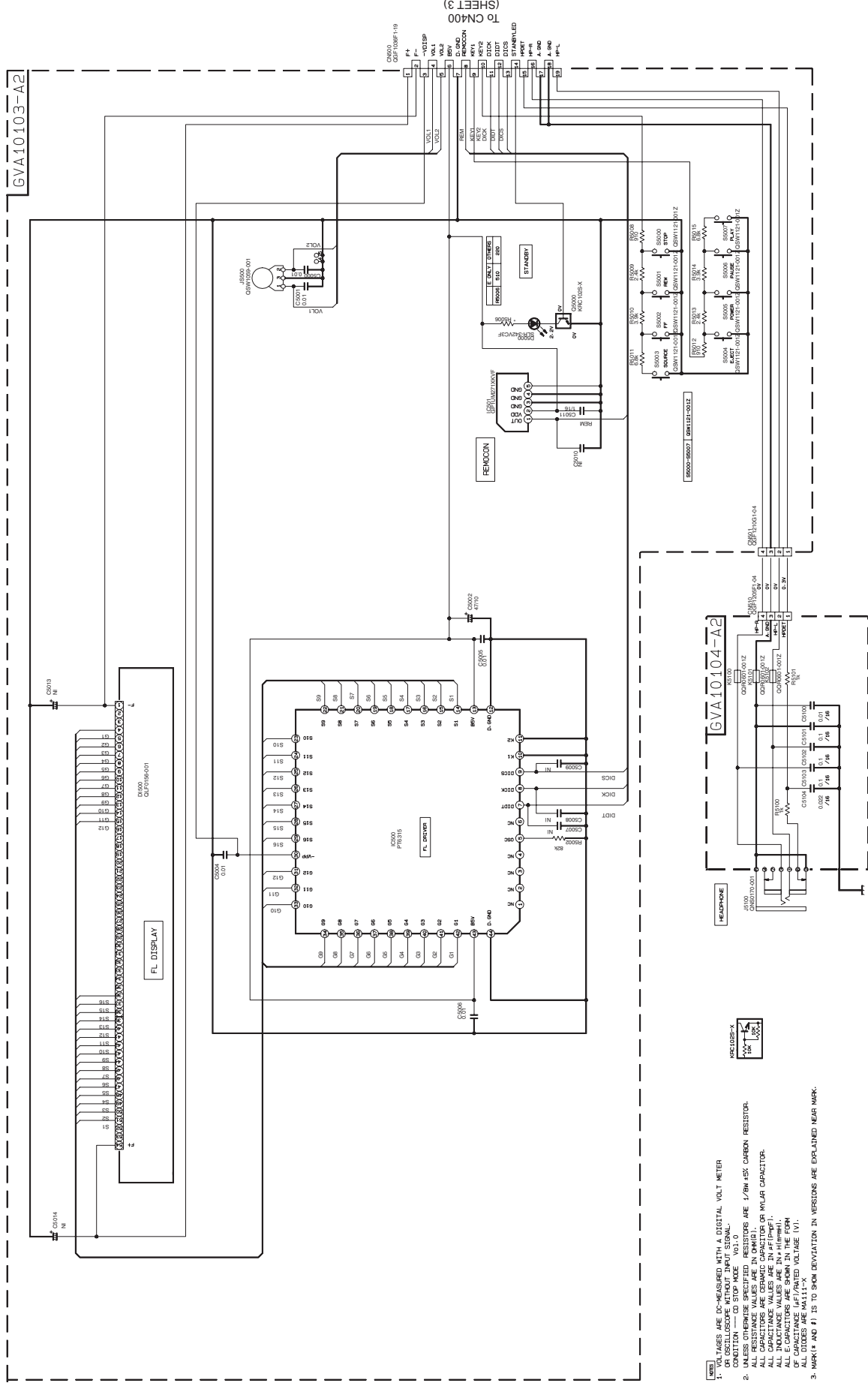
WIRE	WIRE VALUE
W1	Y
W2	B
W3	R
W4	Y
W5	C

1. VOLTAGES ARE UNLESS OTHERWISE SPECIFIED IN DIGITAL VOLT METER CONDITION — CD STOP MARK V01-0

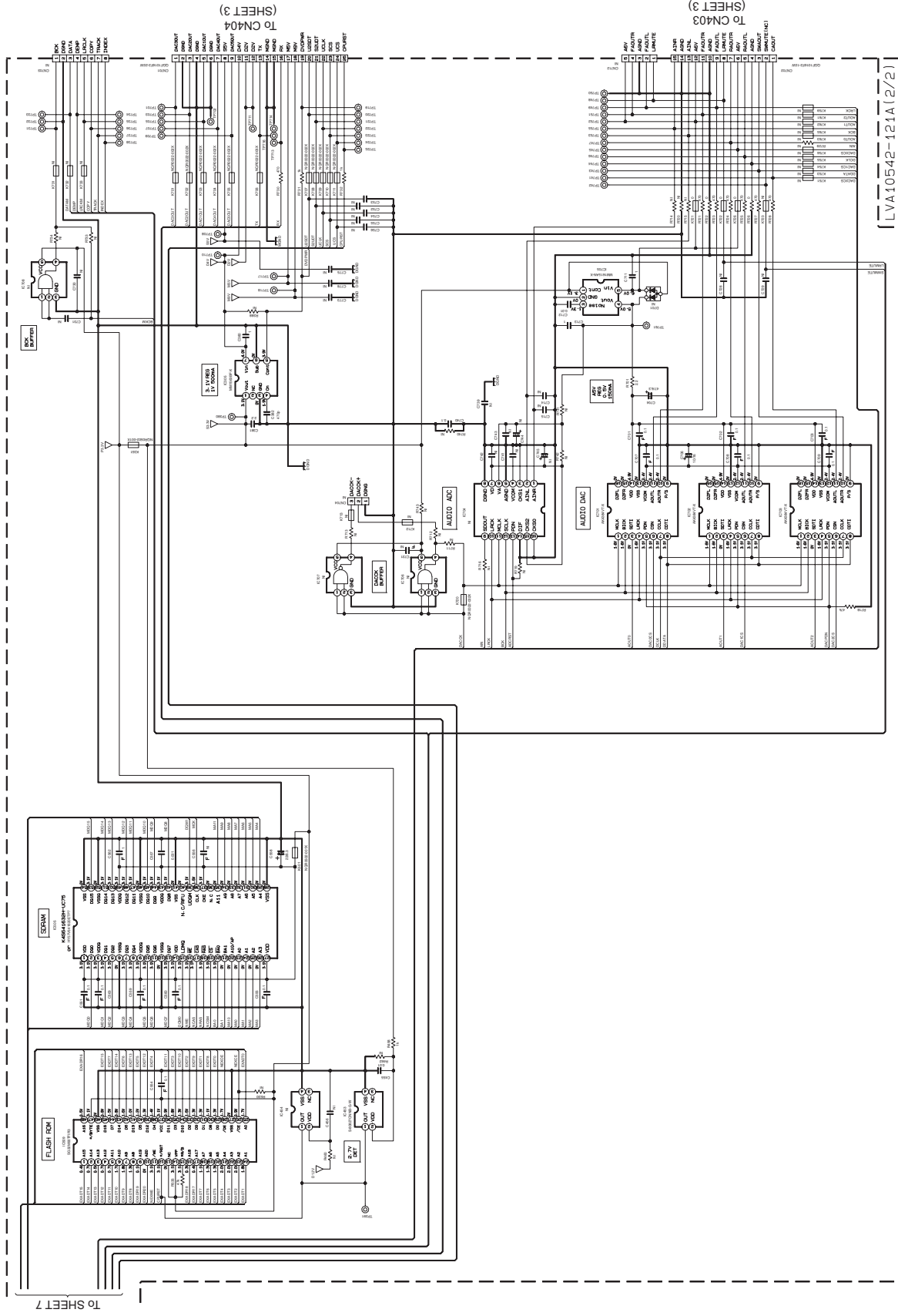
2. UNLESS OTHERWISE SPECIFIED RESISTORS ARE 1/8W ±5% CARBON RESISTOR. ALL CAPACITORS ARE CERAMIC CAPACITOR OR MILAR CAPACITOR. ALL CAPACITANCE VALUES ARE IN pF(μF).

3. MARK # AND #1 IS TO SHOW DEVIATION IN VERSIONS ARE EXPLAINED NEAR MARK.

■ Front section



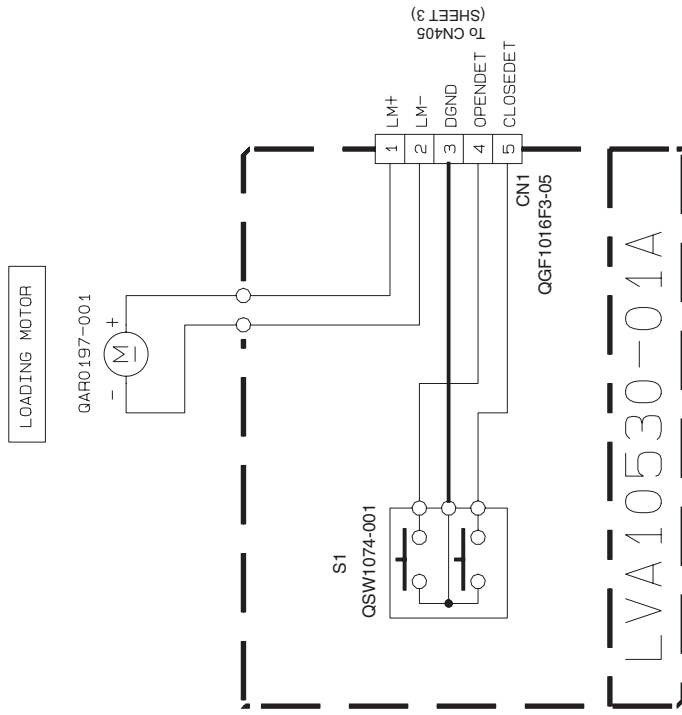
- NOTES**
1. VOLTAGES ARE DC-MEASURED WITH A DIGITAL VOLT METER UNLESS OTHERWISE SPECIFIED. SIGNAL VOLTAGES ARE MEASURED WITH A OSCILLOSCOPE.
 2. UNLESS OTHERWISE SPECIFIED, RESISTORS ARE 1/8W 45% CARBON RESISTOR. ALL RESISTANCE VALUES ARE IN OHMS (Ω), ALL CAPACITANCE VALUES ARE IN PICO-FARAD (pF). ALL INDUCTANCE VALUES ARE IN MILLI-HENRY (mH). ALL CAPACITORS ARE SHOWN IN THE FORM $C\#(V)\#(T)\#(M)\#(X)$. ALL DIODES ARE MALLI-X.
 3. MARK (A AND #) IS TO SHOW DEVIATION IN VERSIONS ARE EXPLAINED NEAR MARK.



- NOTES
1. VOLTAGES ARE DIMENSIONED WITH A DIGITAL VOLT METER WITHOUT INPUT SIGNAL.
 2. ALL RESISTANCE VALUES ARE IN OHMS UNLESS OTHERWISE SPECIFIED.
 3. ALL CAPACITANCE VALUES ARE IN PICO FARADS UNLESS OTHERWISE SPECIFIED.
 4. ALL DIMENSIONS ARE DIMENSIONS FROM THE CENTER OF THE COMPONENT UNLESS OTHERWISE SPECIFIED.
 5. ALL RESISTANCE VALUES ARE IN OHMS UNLESS OTHERWISE SPECIFIED.
 6. ALL CAPACITANCE VALUES ARE IN PICO FARADS UNLESS OTHERWISE SPECIFIED.
 7. ALL DIMENSIONS ARE DIMENSIONS FROM THE CENTER OF THE COMPONENT UNLESS OTHERWISE SPECIFIED.
 8. ALL DIMENSIONS ARE DIMENSIONS FROM THE CENTER OF THE COMPONENT UNLESS OTHERWISE SPECIFIED.

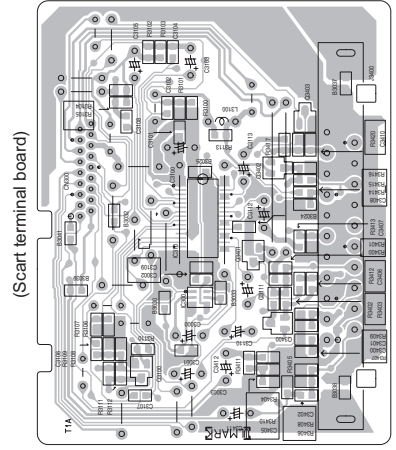
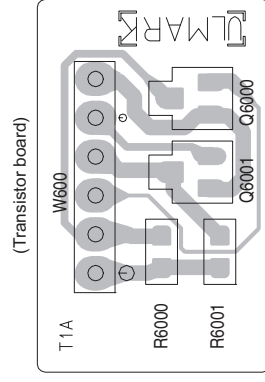
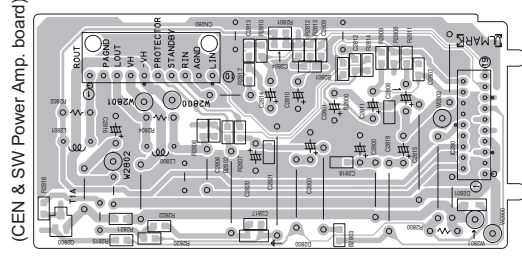
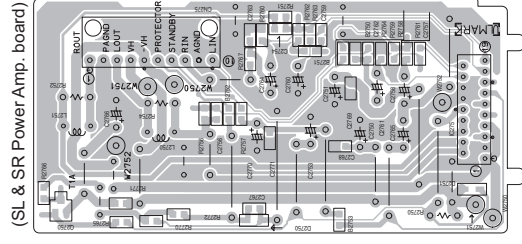
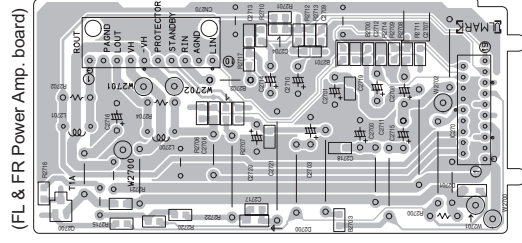
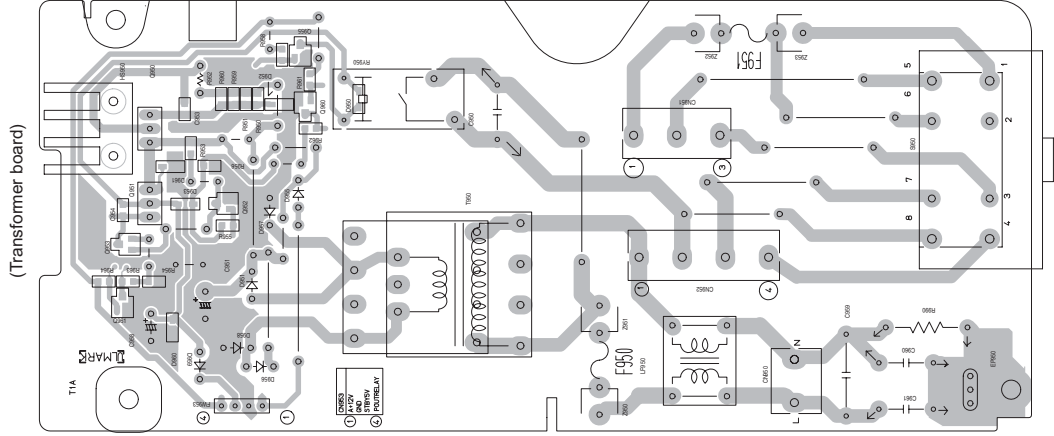
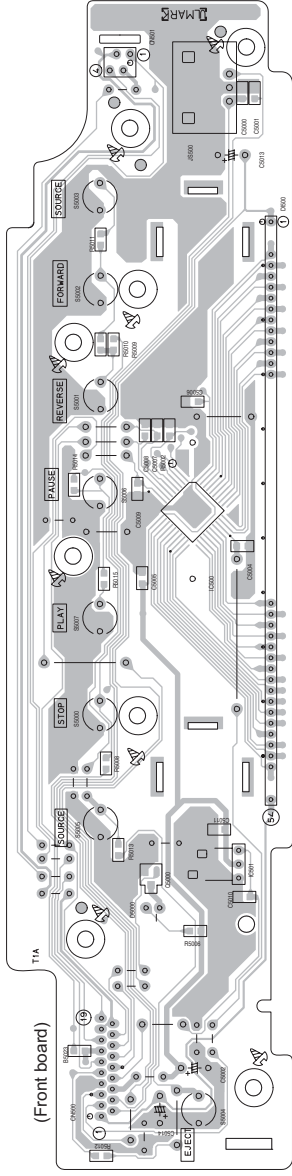
■ Loader section

< MEMO >



Lead free solder used in the board (material : Sn-Ag-Cu, melting point : 219 Centigrade)

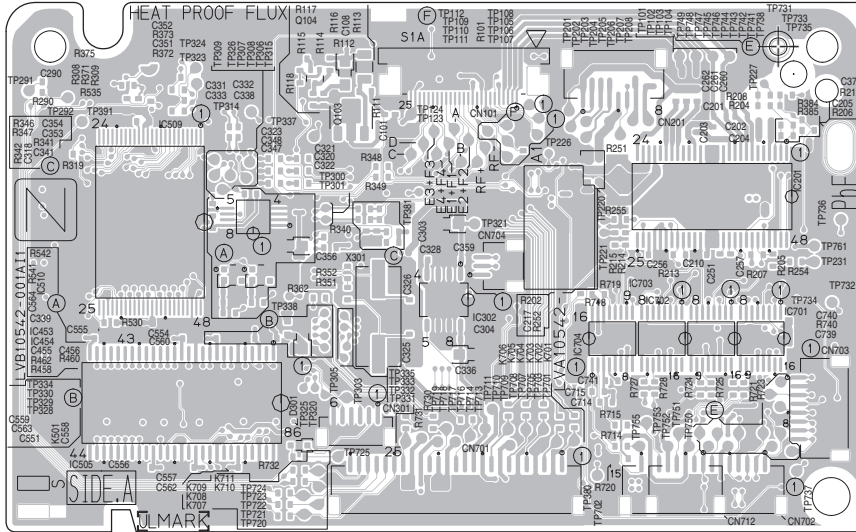
Trans board



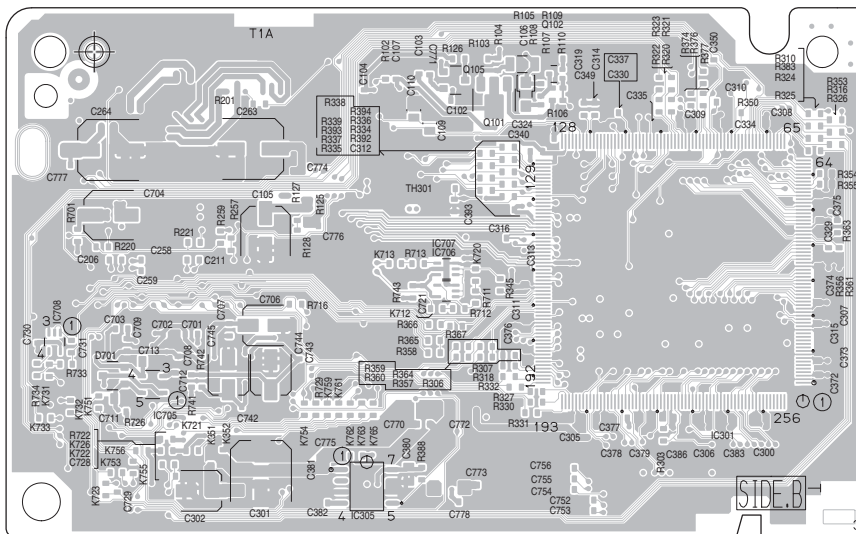
■ DVD servo control board

Lead free solder used in the board (material : Sn-Ag-Cu, melting point : 219 Centigrade)

Forward side

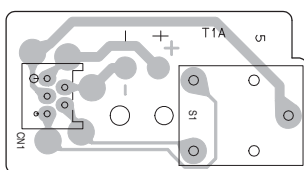


Reverse side



■ DVD loading switch board

Lead free solder used in the board (material : Sn-Ag-Cu, melting point : 219 Centigrade)



JVC

Victor Company of Japan, Limited

AV & MULTIMEDIA COMPANY AUDIO/VIDEO SYSTEMS CATEGORY 10-1,1chome,Ohwatari-machi,Maebashi-city,371-8543,Japan

(No.MB393SCH)



Printed in Japan
VPT