

Sprint Layout 5.

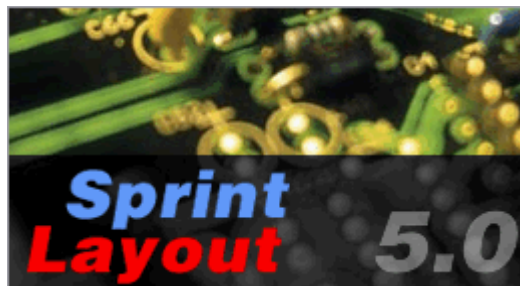
.

DI HALT

Sailanser.

Sprint-Layout,

, 5.0



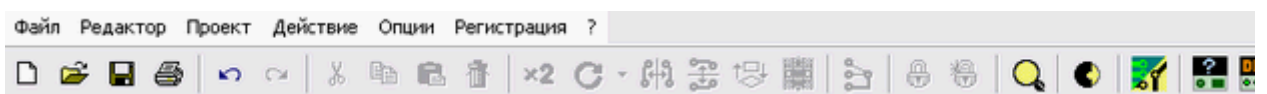
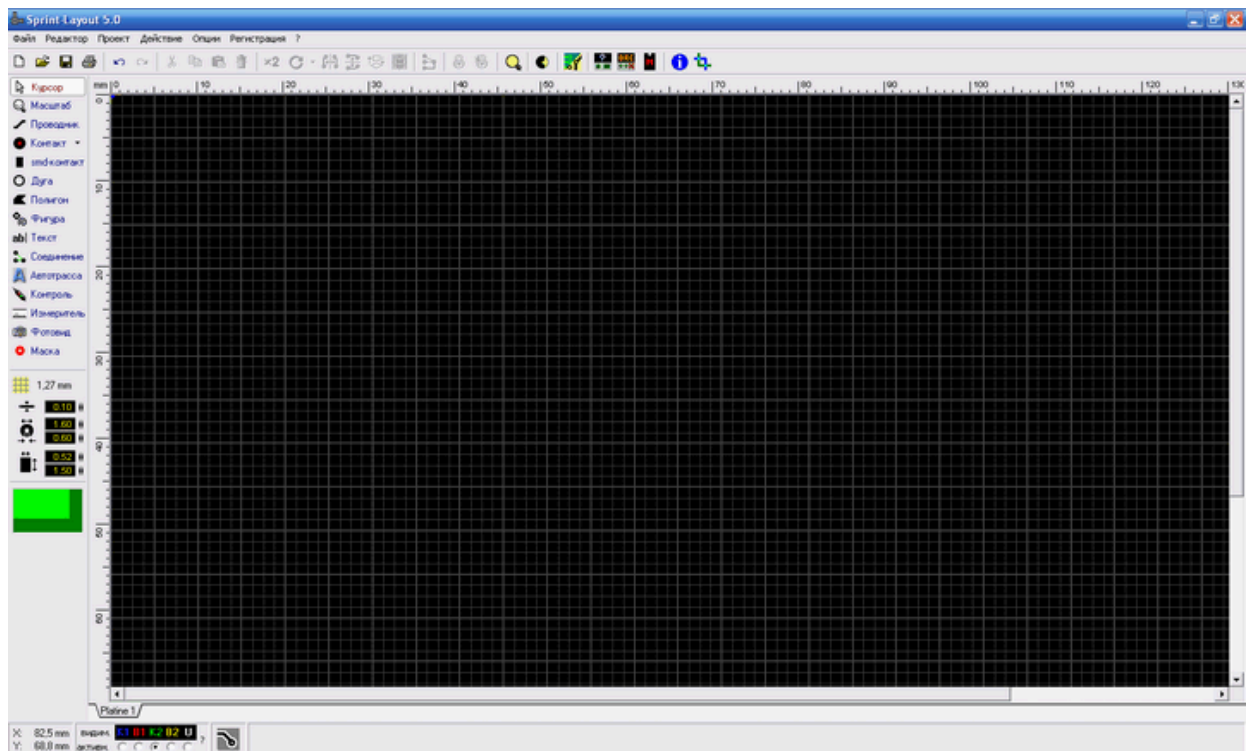
DIP

(

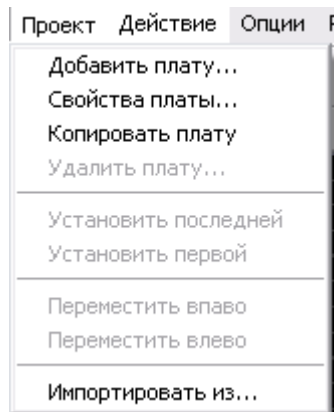
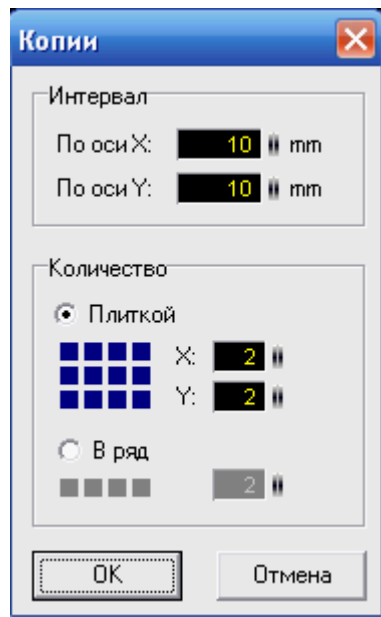
),

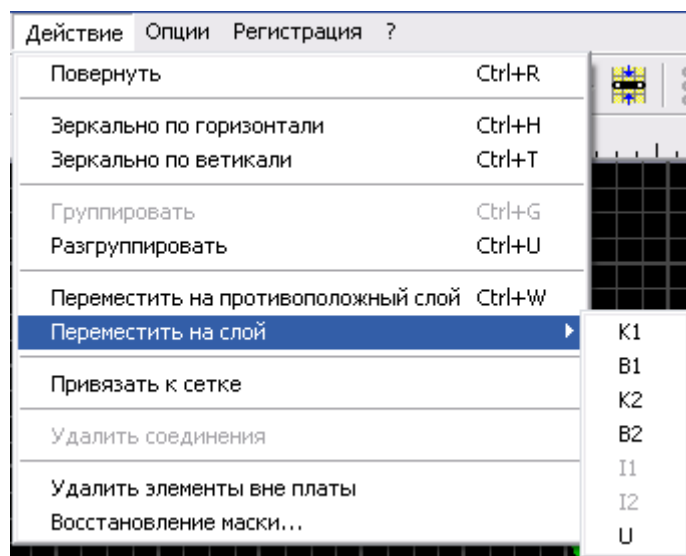
TQFP-32.

1:



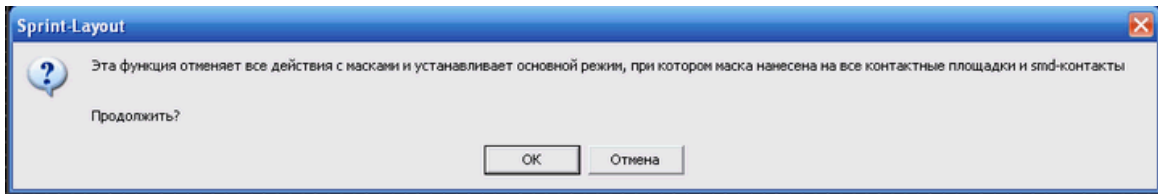
- Новый...
- Открыть...
- Сохранить
- Сохранить как...
- Сохранить как макрос...
- Автосохранение...
- Экспорт
- Директории...
- Установки принтера...
- Печать...
- 1 Nameleon B_2.lay
- 2 116.lay
- 3 Main2.lay
- 4 termo4.lay
- Выход





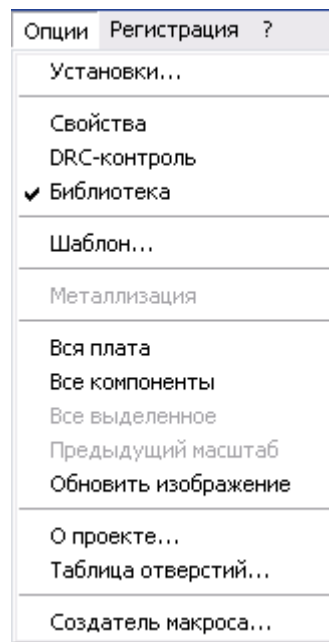
(Eagle)

Sprint-Layout

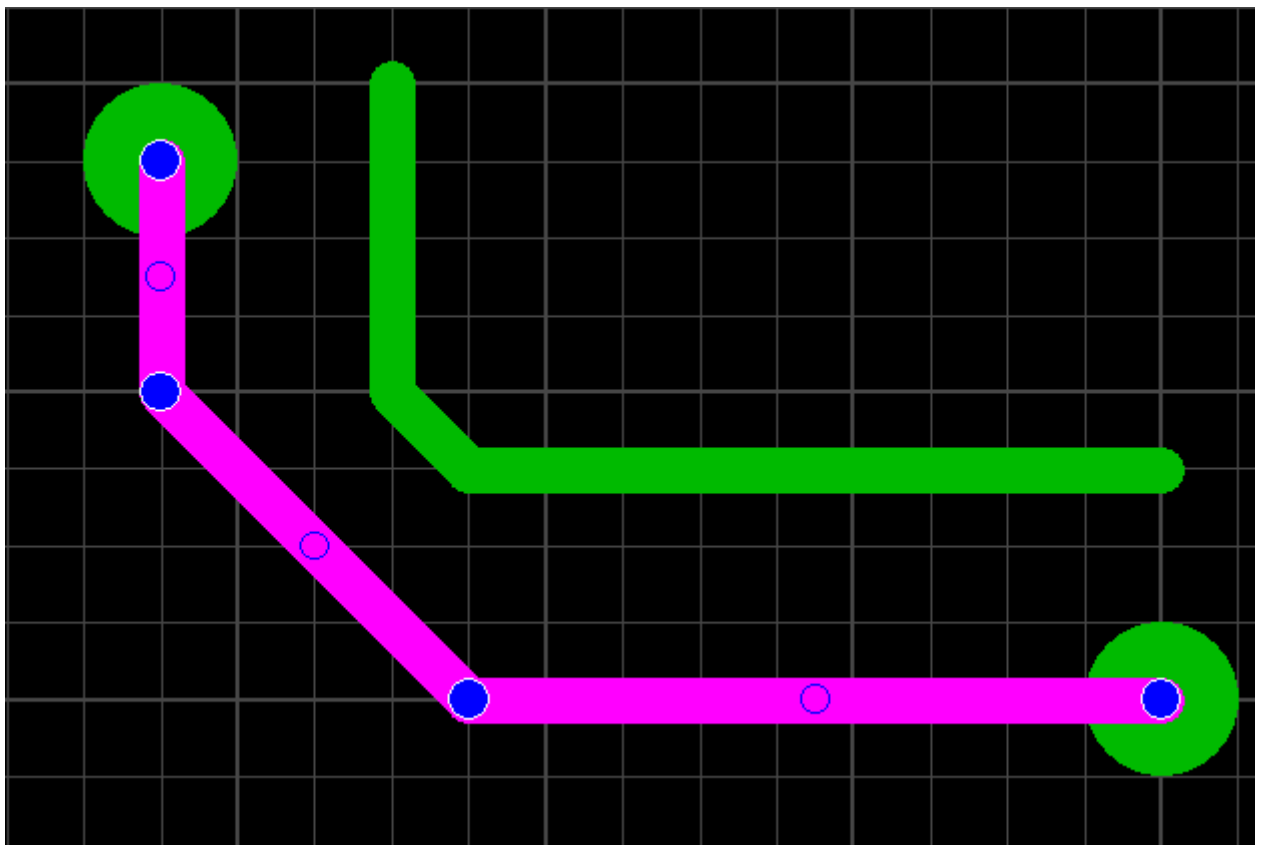
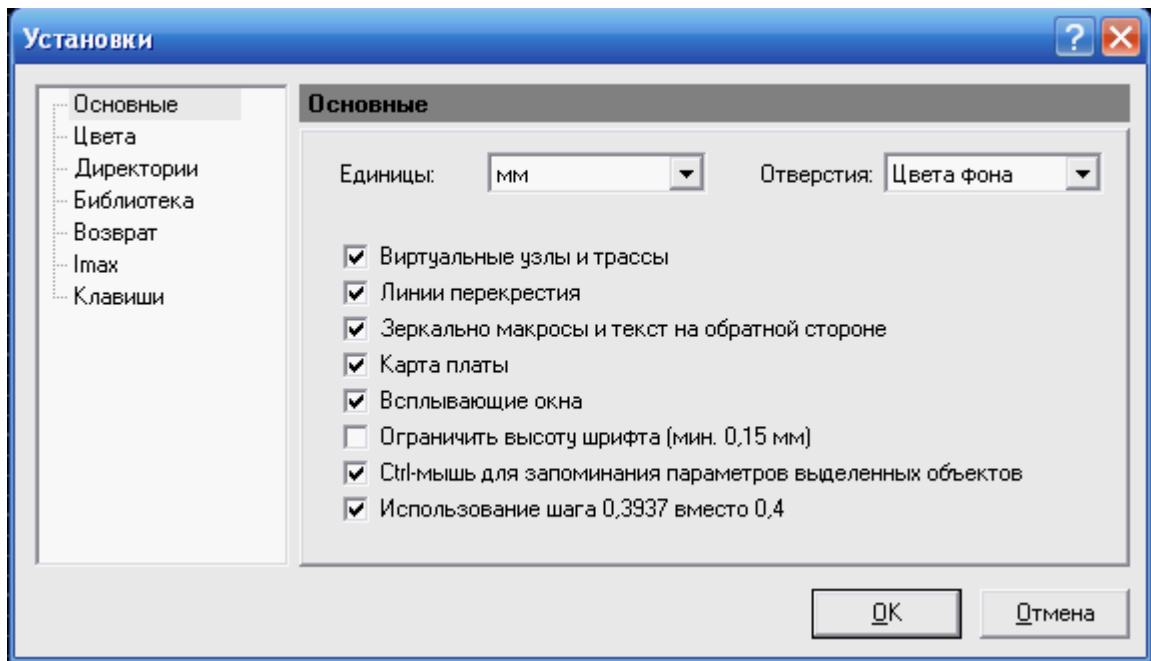


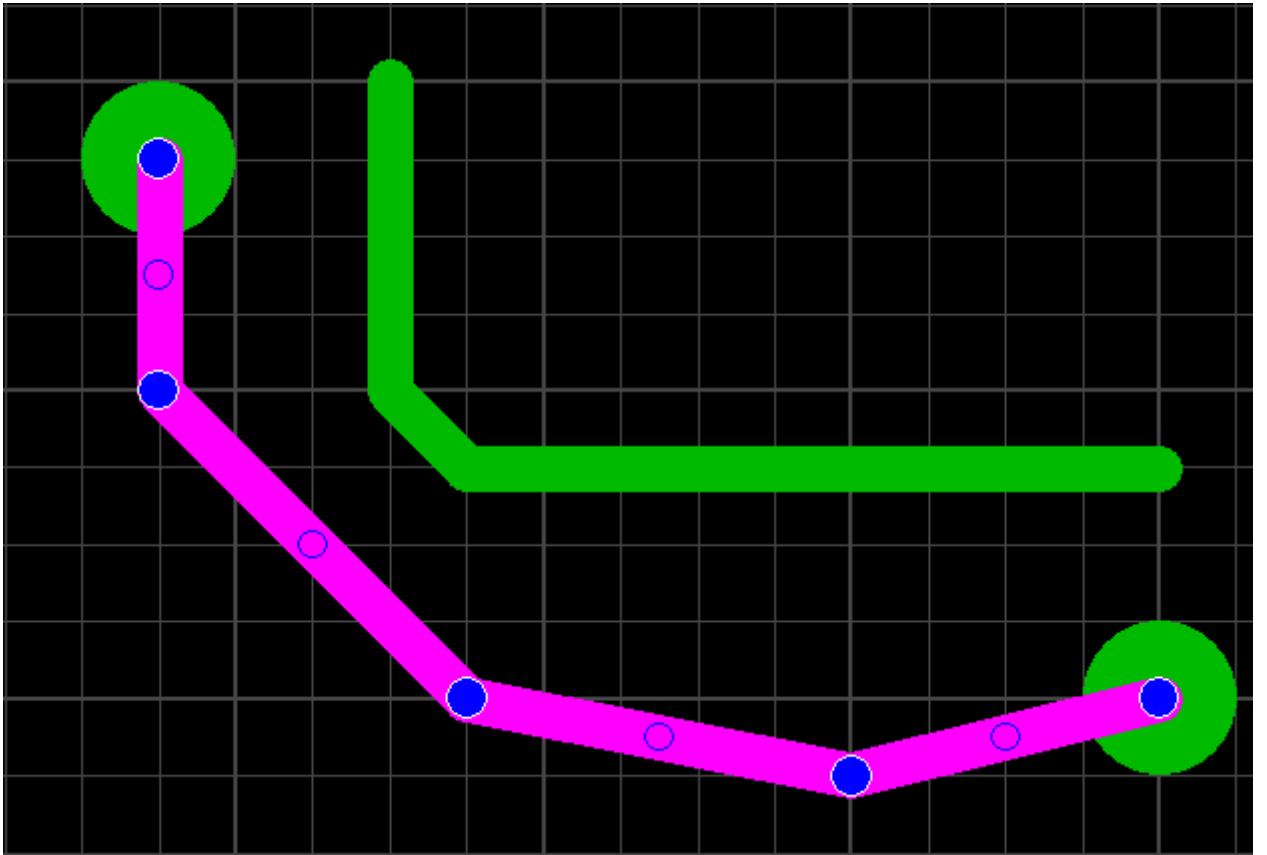
“ ”

Pinboard



• ...





RTS

:)

(0,15)

1,5
1,5
Ctrl+

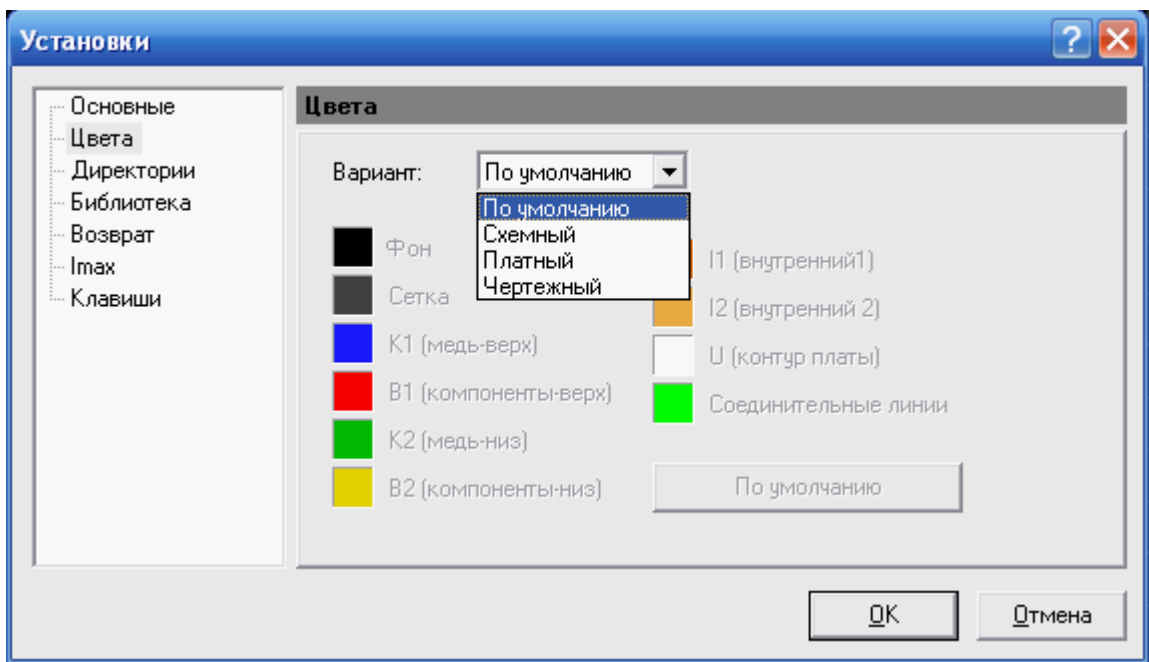


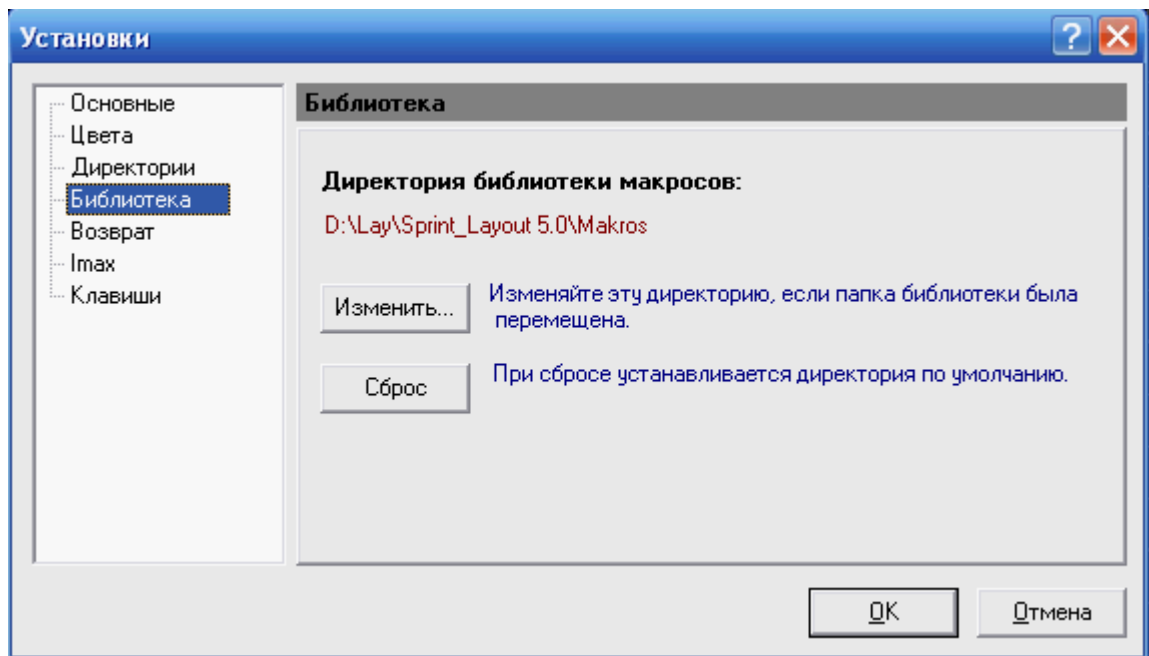
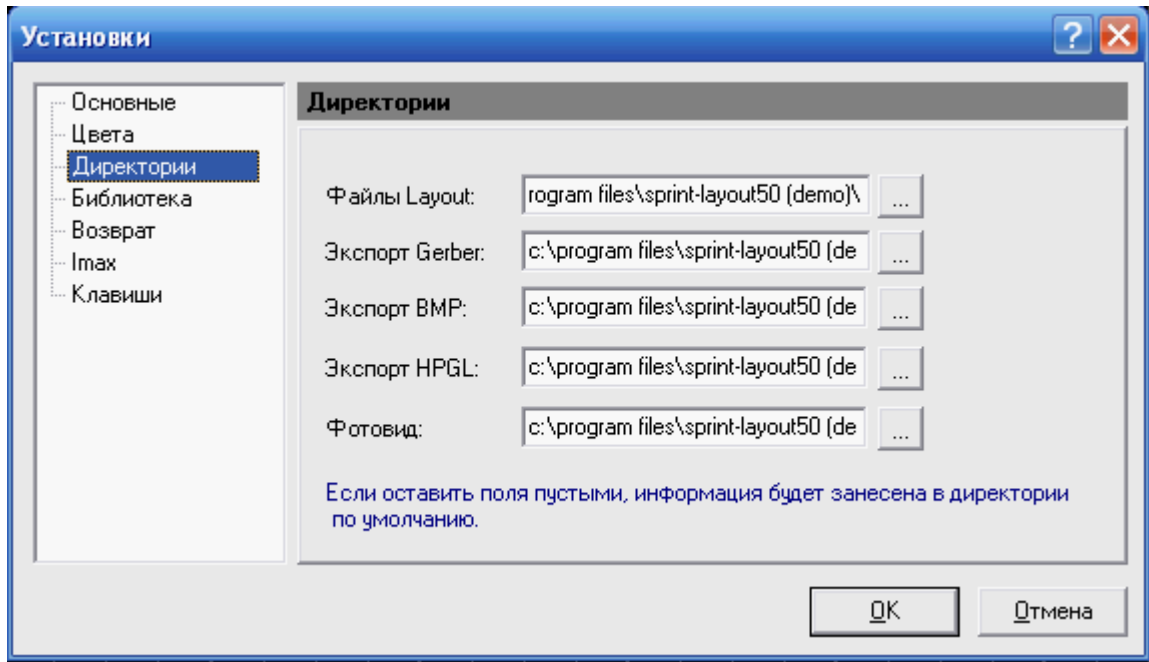
0,55
0,60,
0,6
Ctrl
0,6
0,6

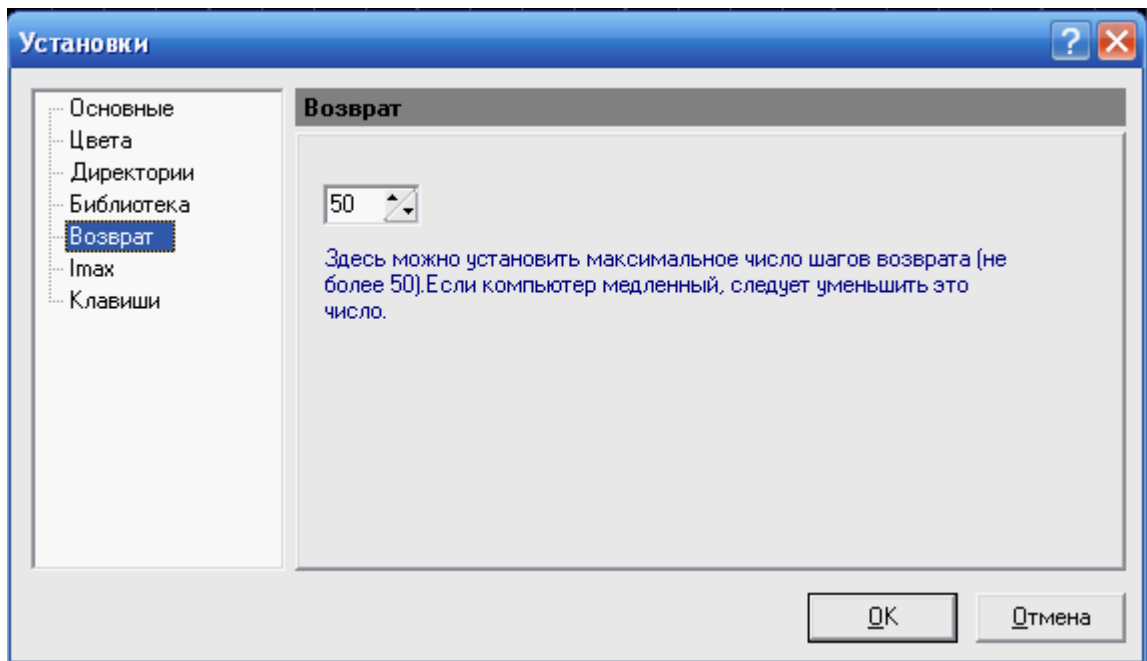
0,3937 0,4.

mit Faktor 0.3937 statt 0.4

HPGL-Skalierung
HPGL

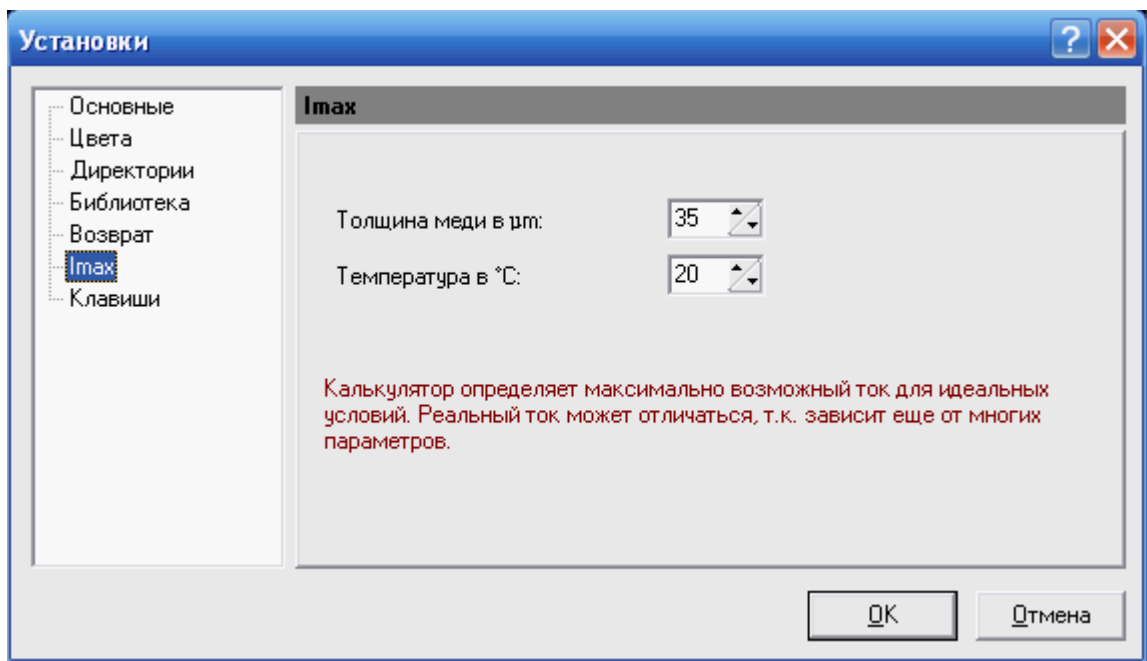


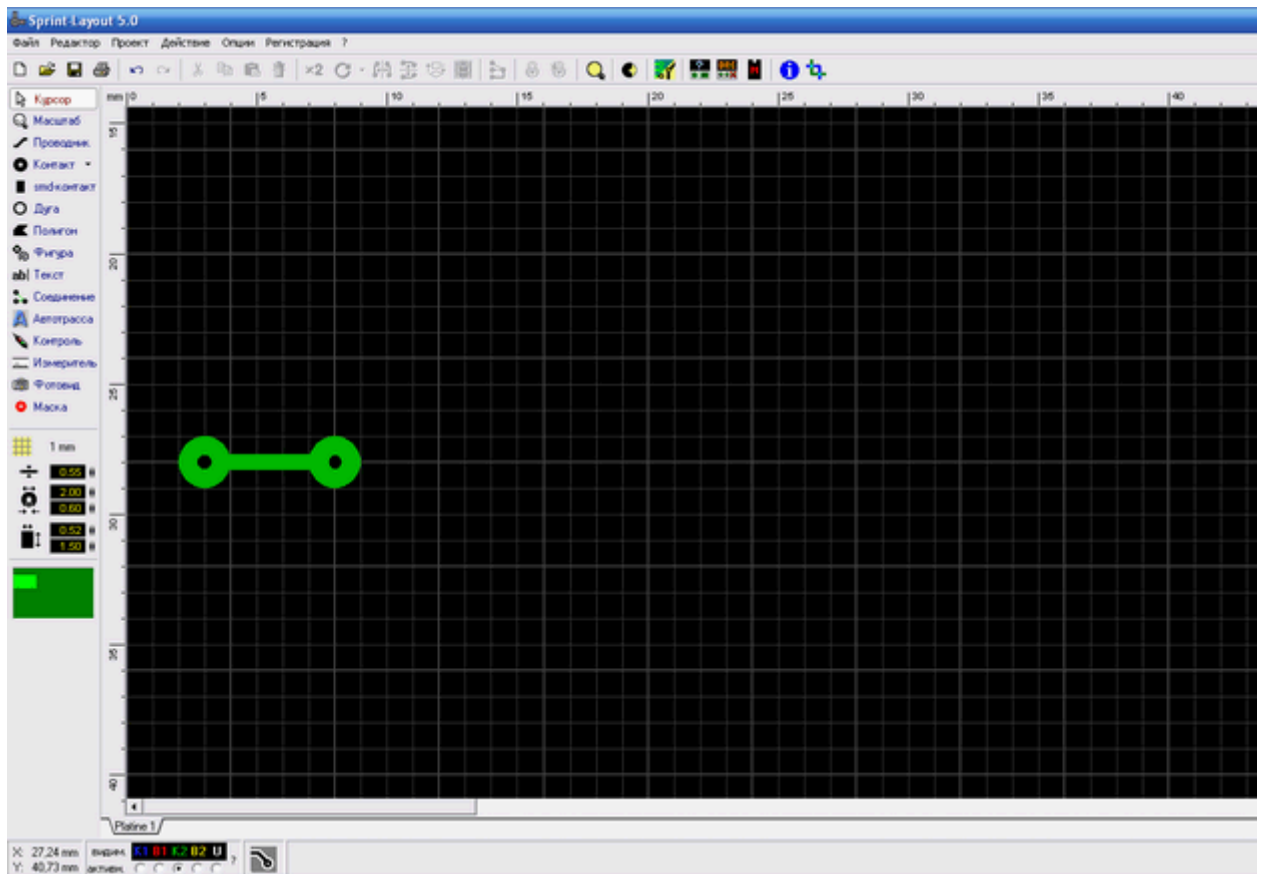
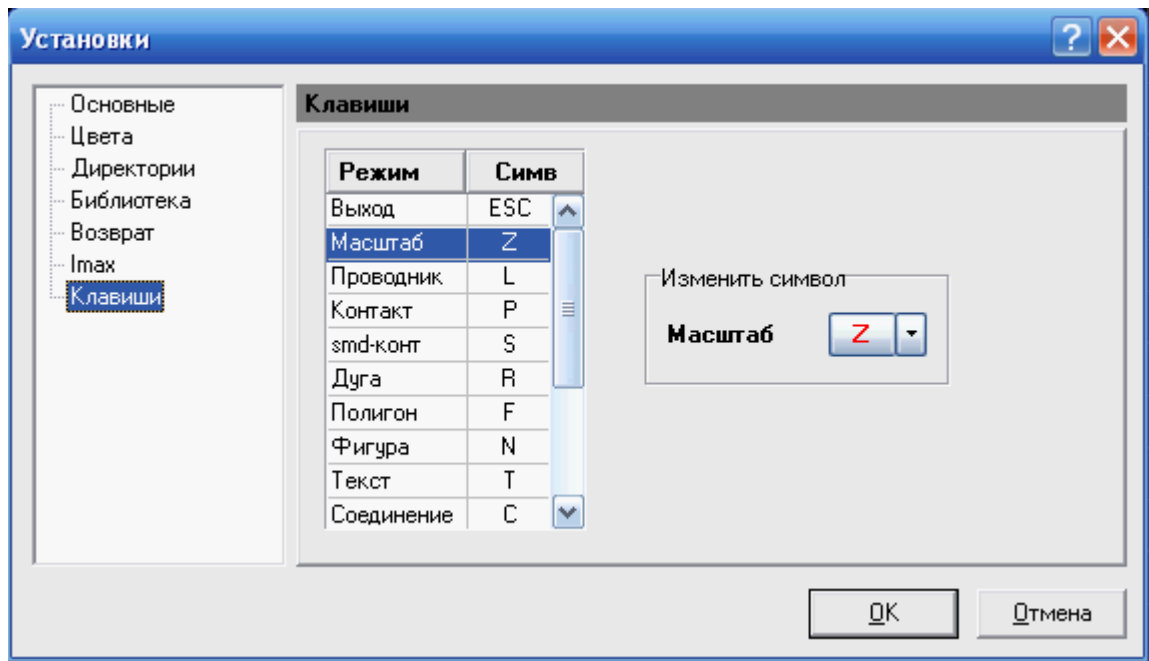




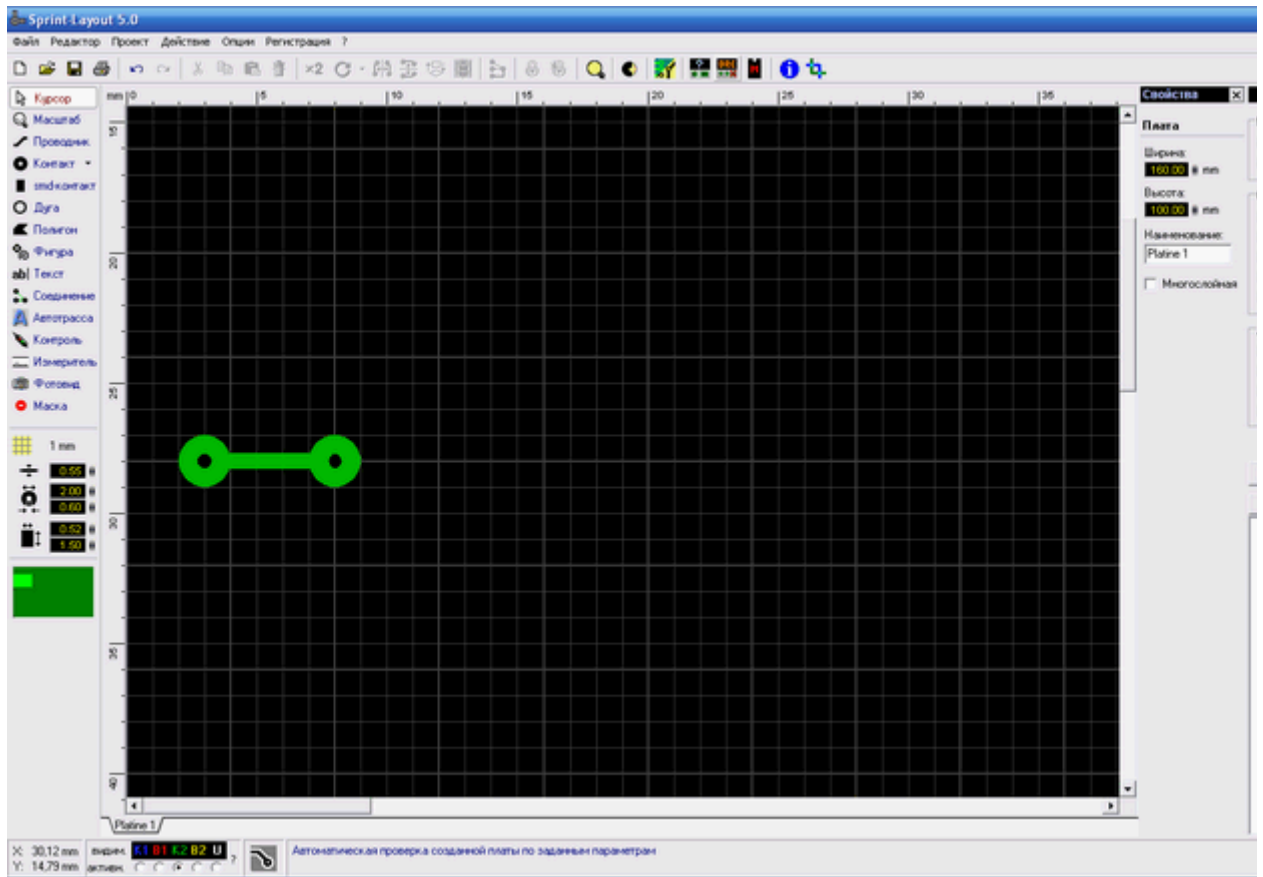
50.

I_{max} ————— 3D





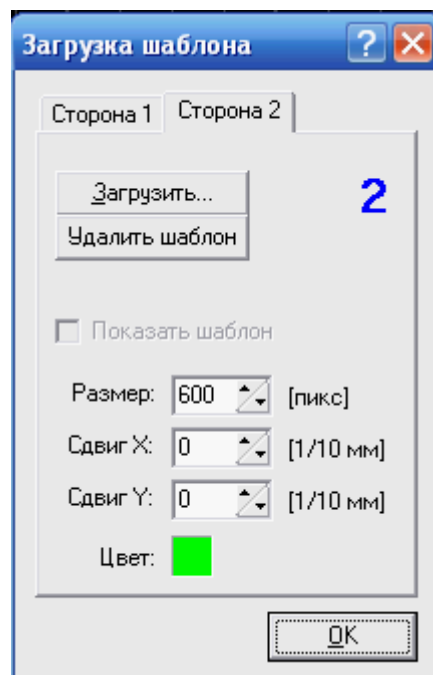
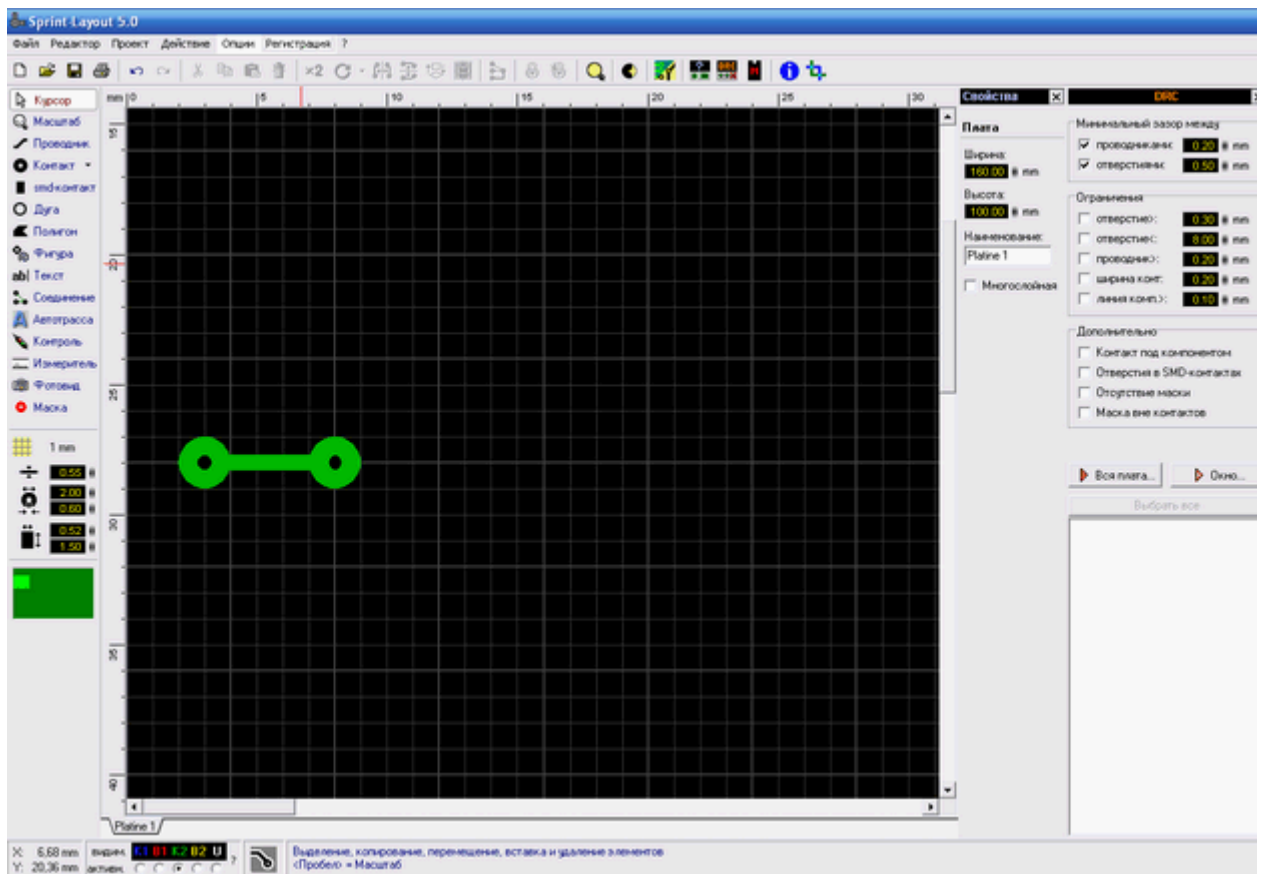
DRC-

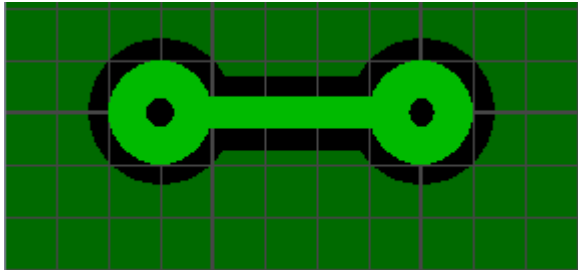


0.3

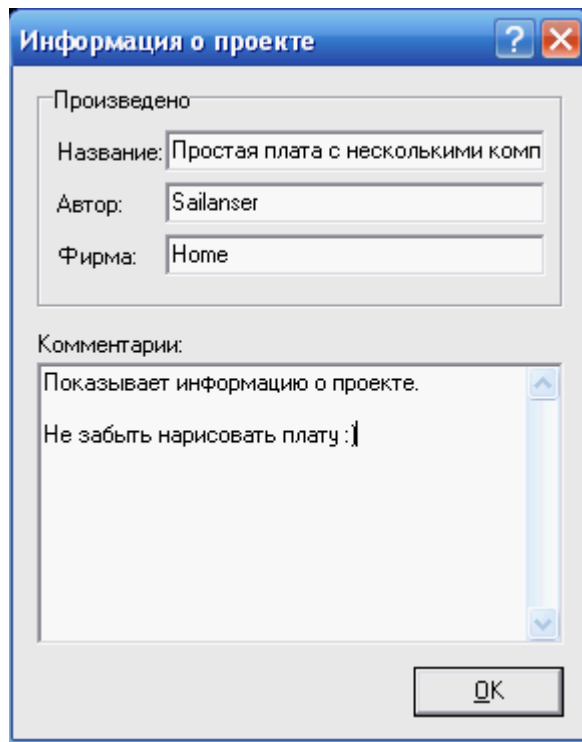
0.2

DRC



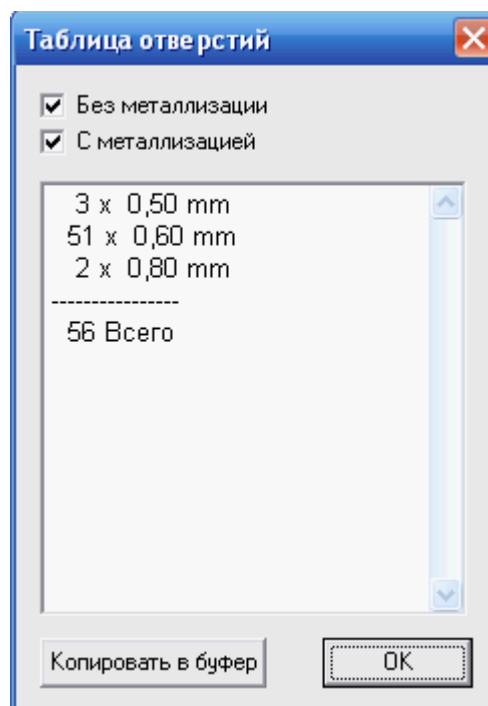


...



...

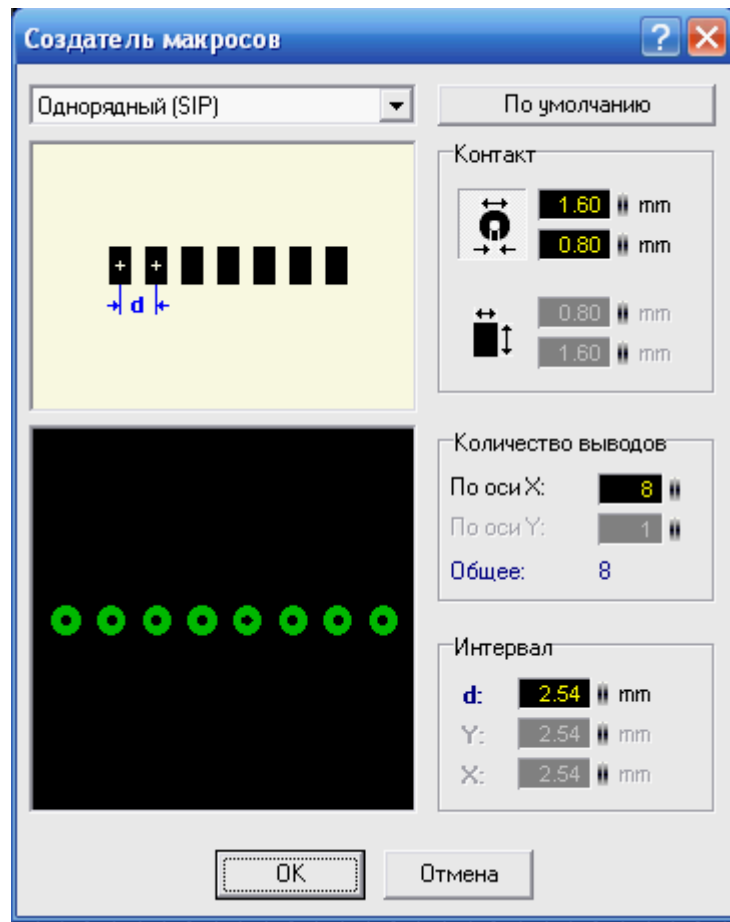
0,6

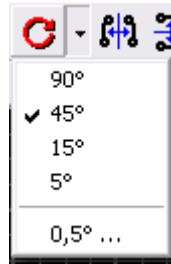


56

0,6

SSOP,MLF,TQFP



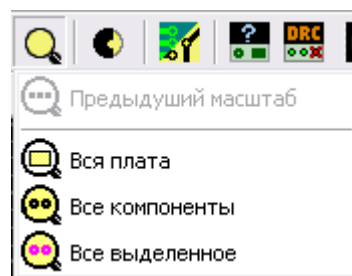
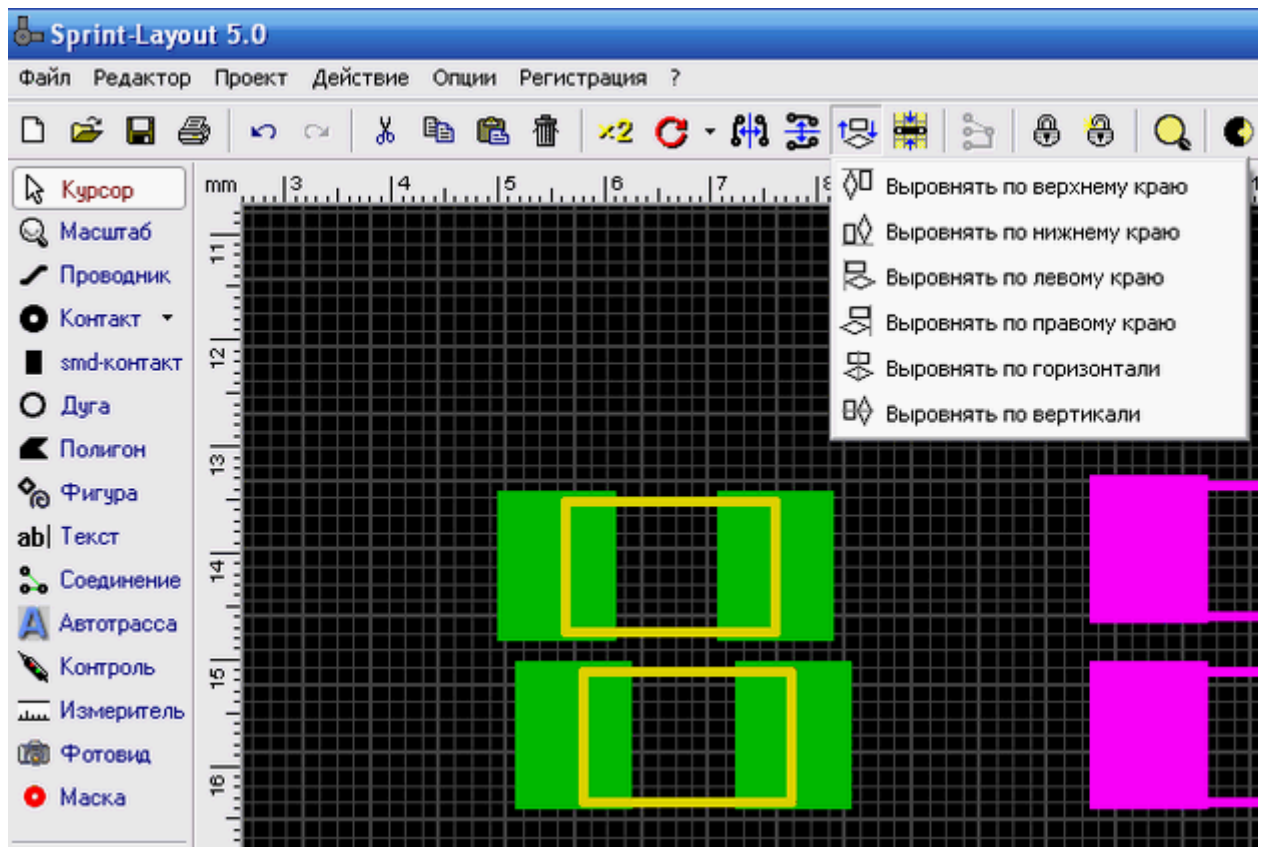


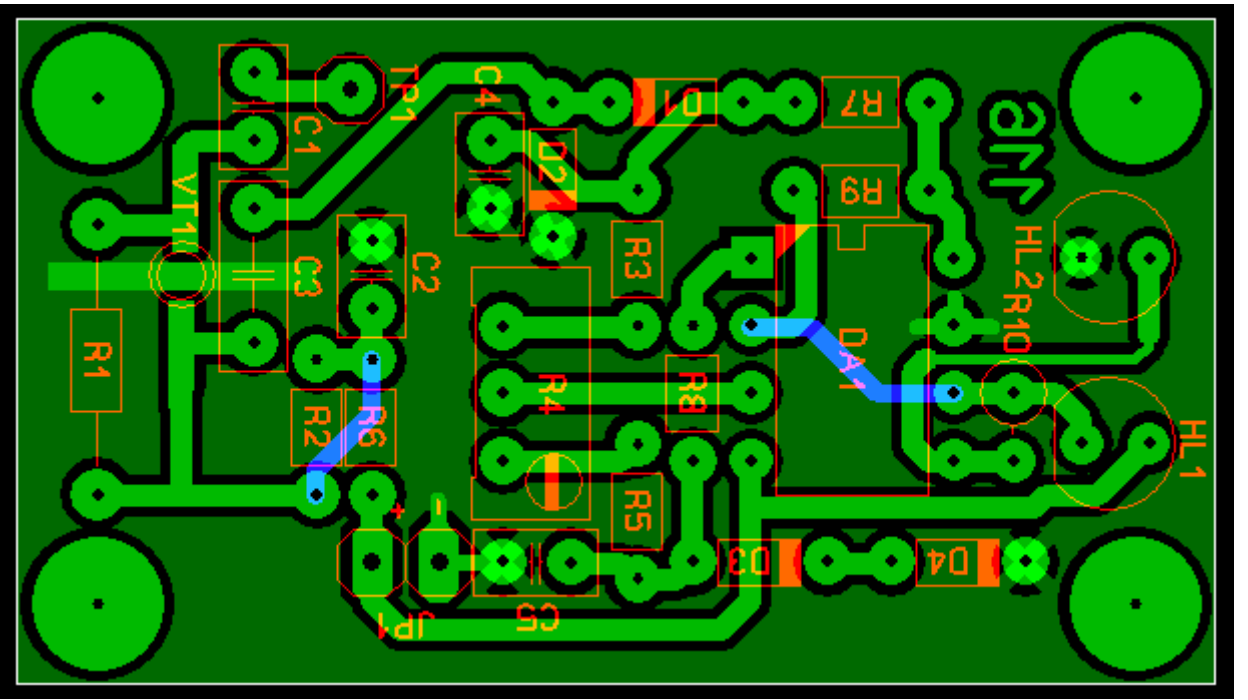
90
0,5 .

!

Topor
:)

SMD





Курсор

Масштаб

Проводник

Контакт ▾

smd-контакт

Дуга

Полигон

Фигура

ab| Текст

Соединение


Автотрасса


Контроль


Измеритель


Фотовид


Маска


 1,27 mm


 0.70 ||

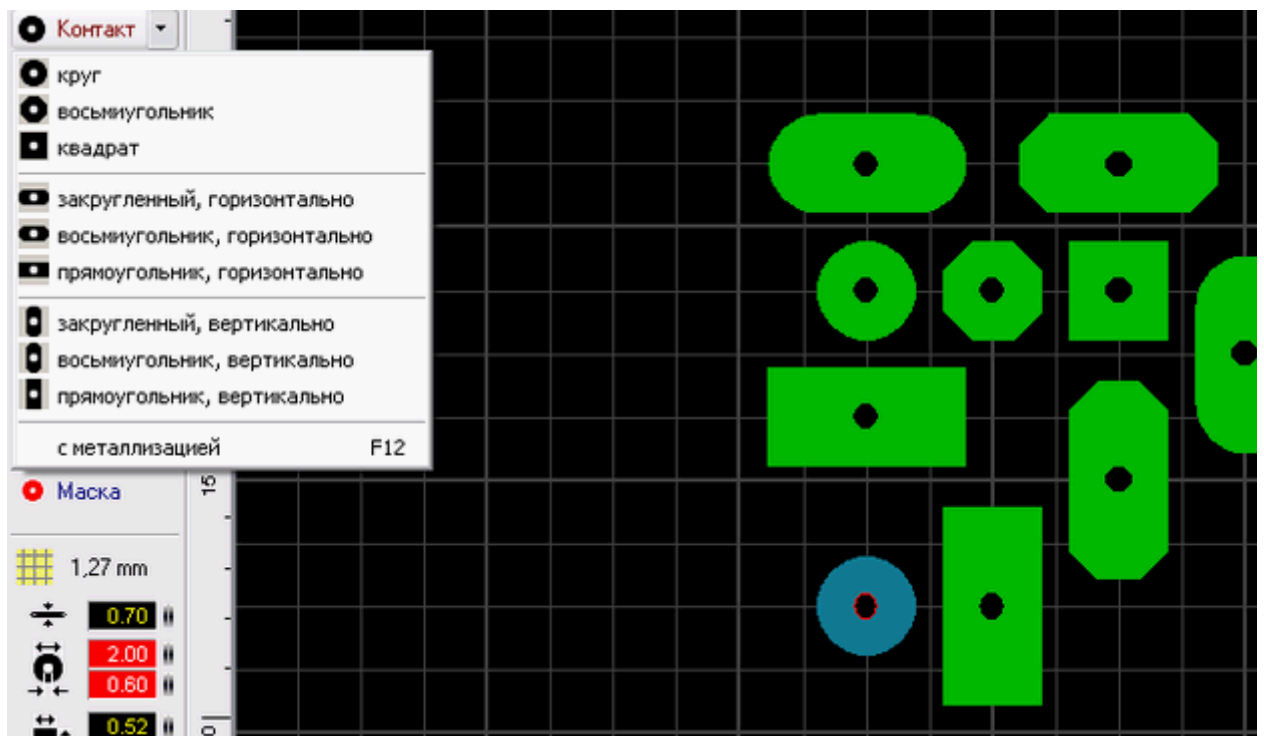
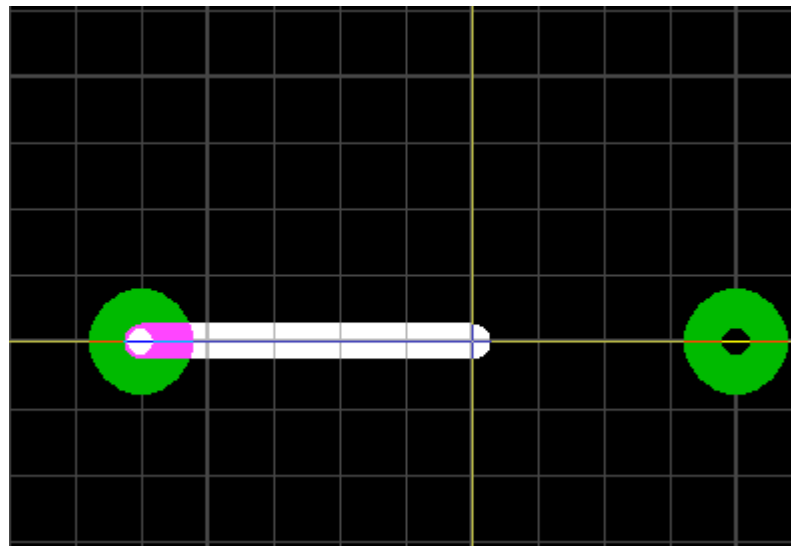
 2.00 ||

 0.60 ||

 0.52 ||

 1.50 ||

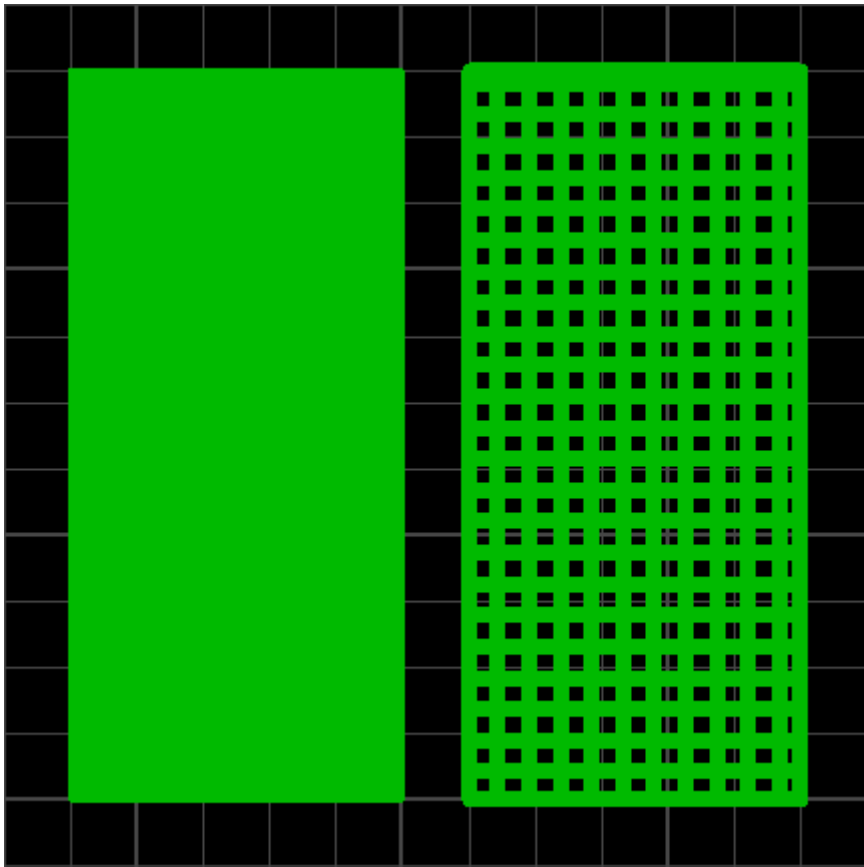
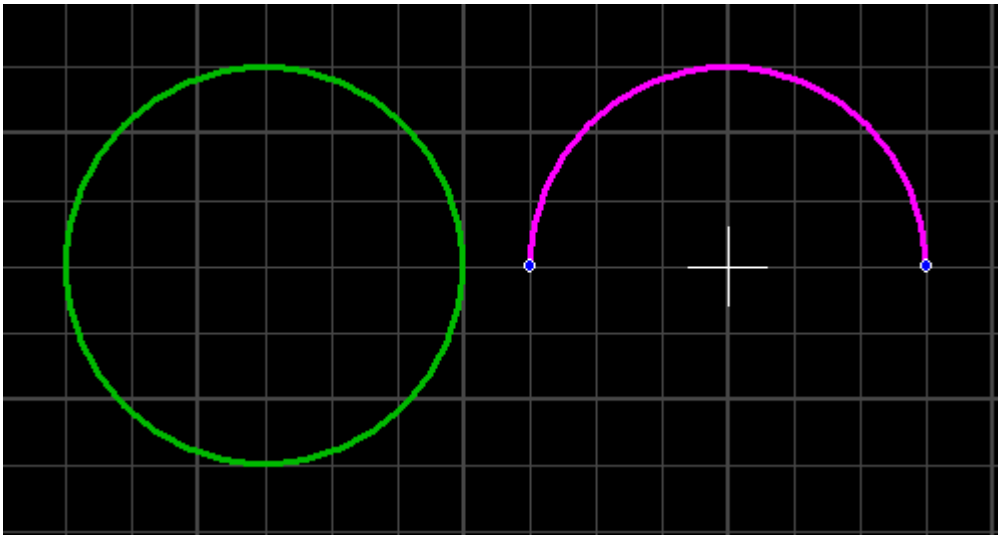


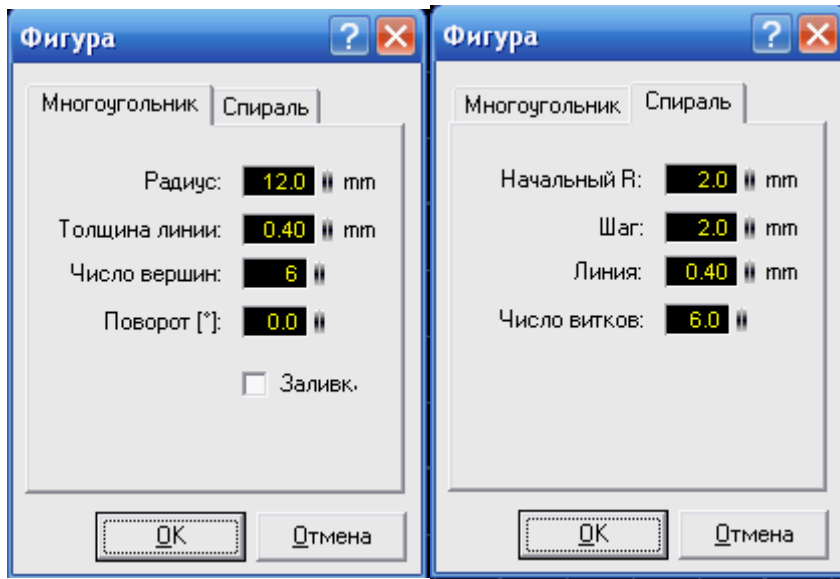


« »

SMD-

smd



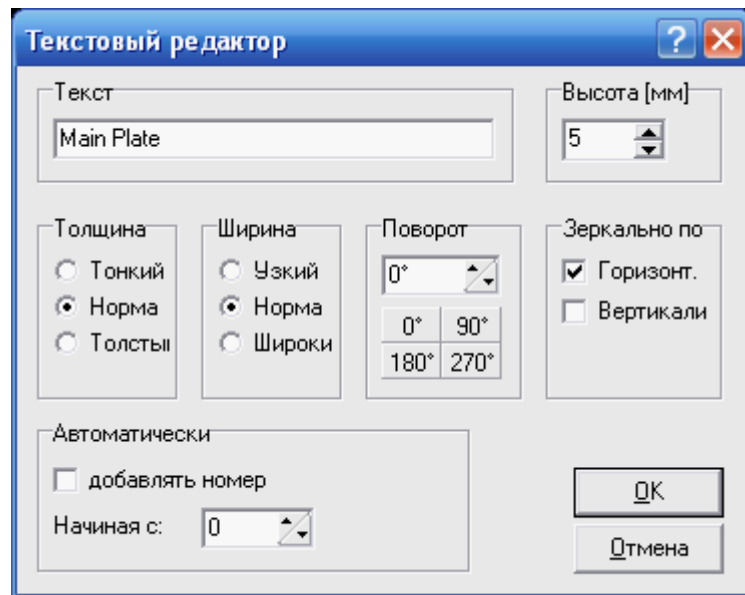


1,5

5

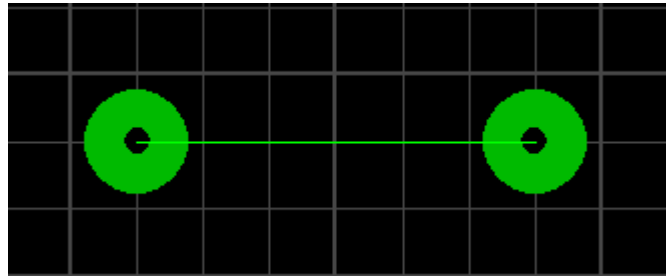
1,5

0,1

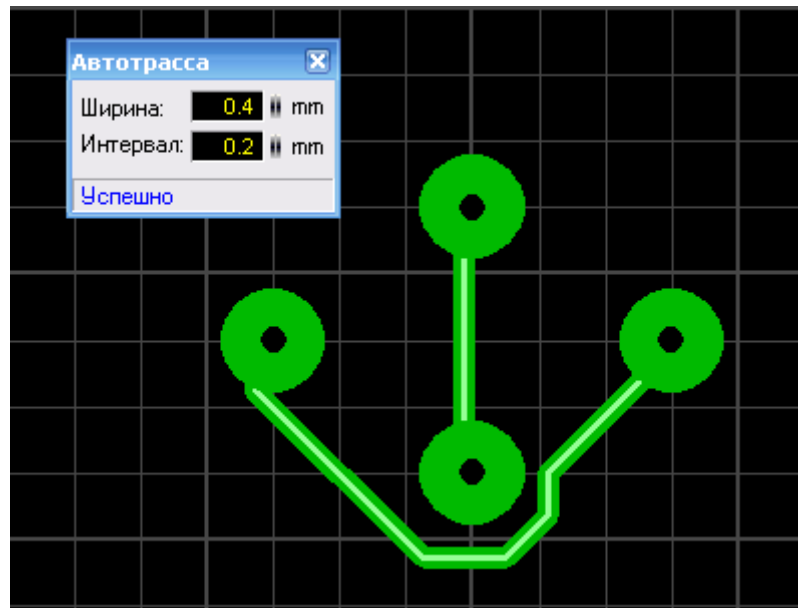


«

»

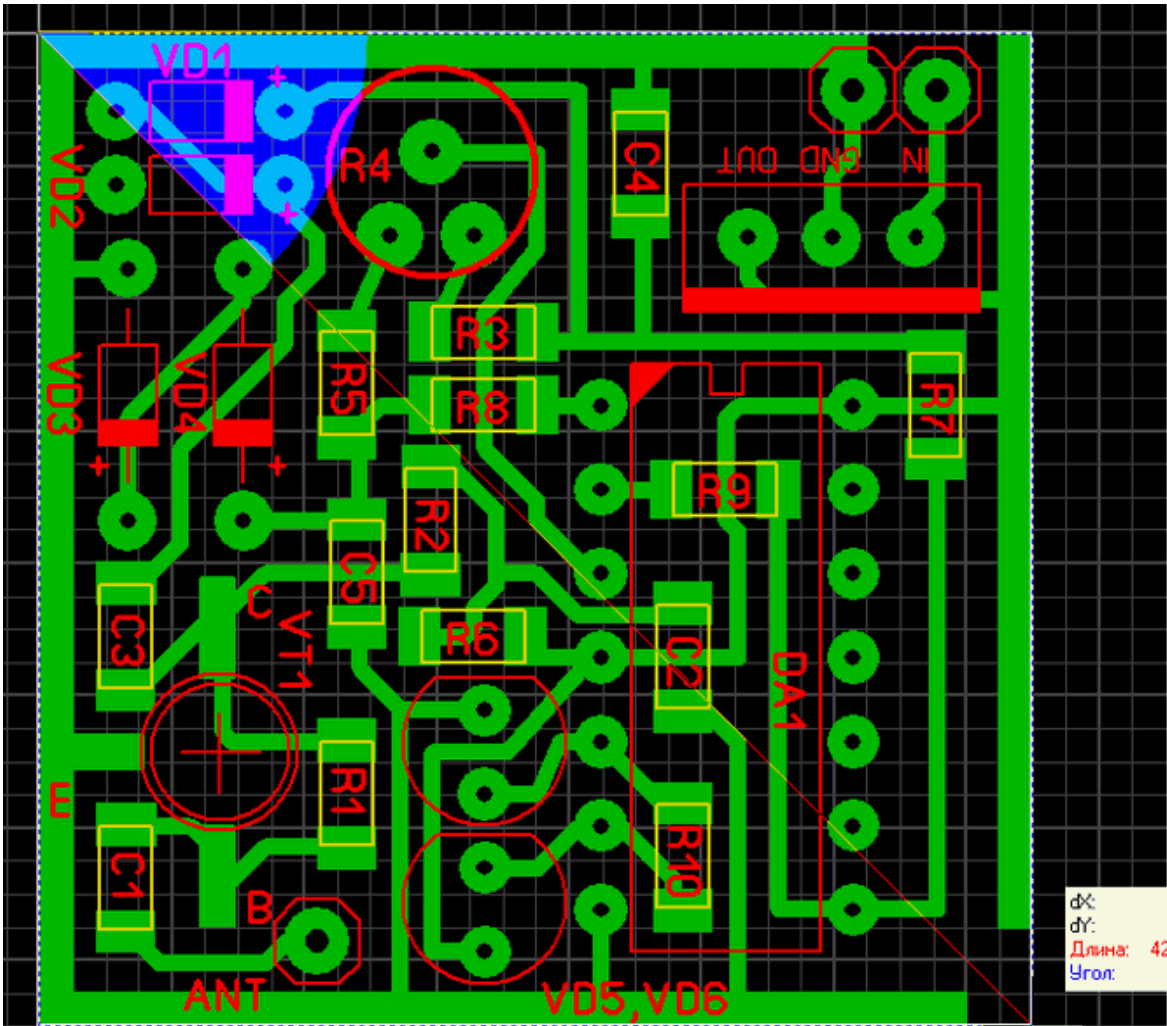


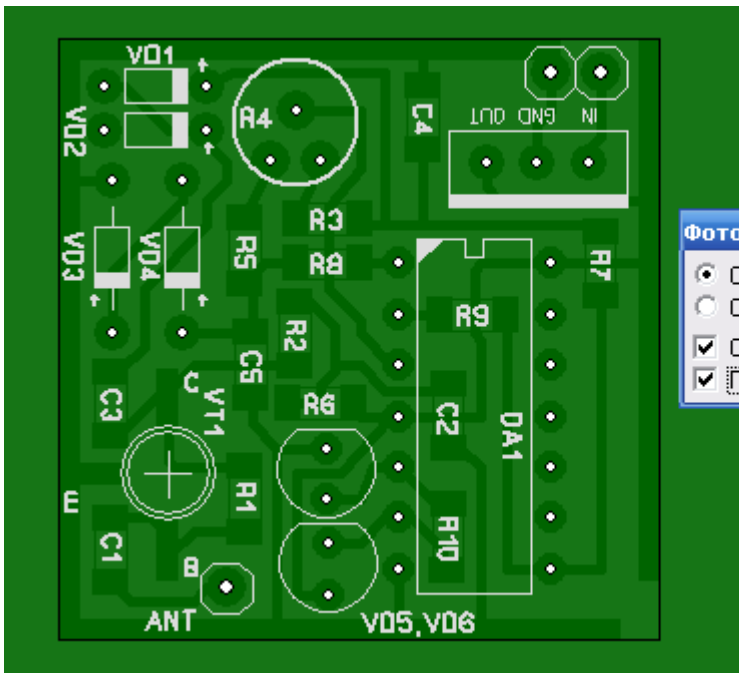
“ ”



:)

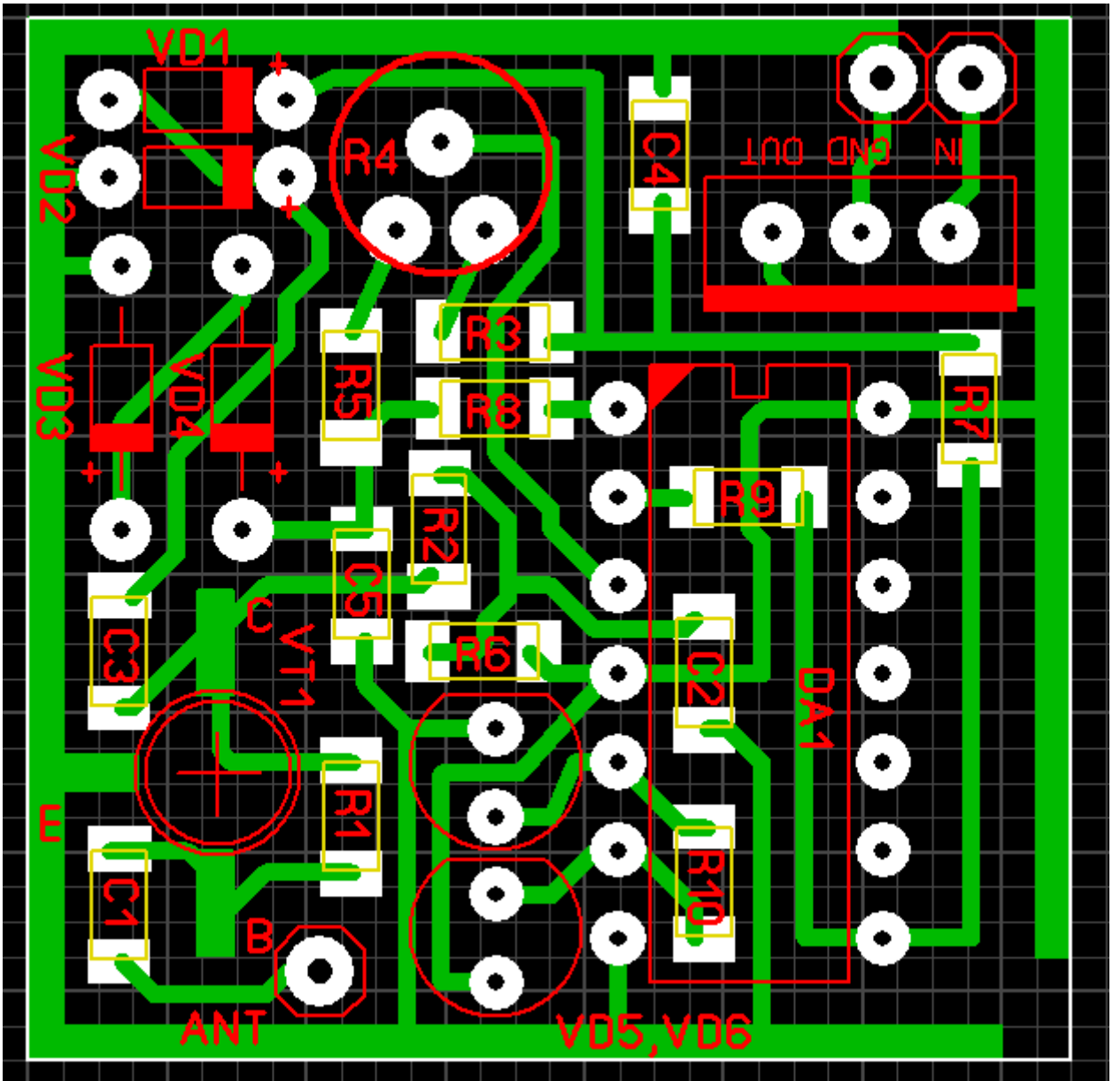
“ ”





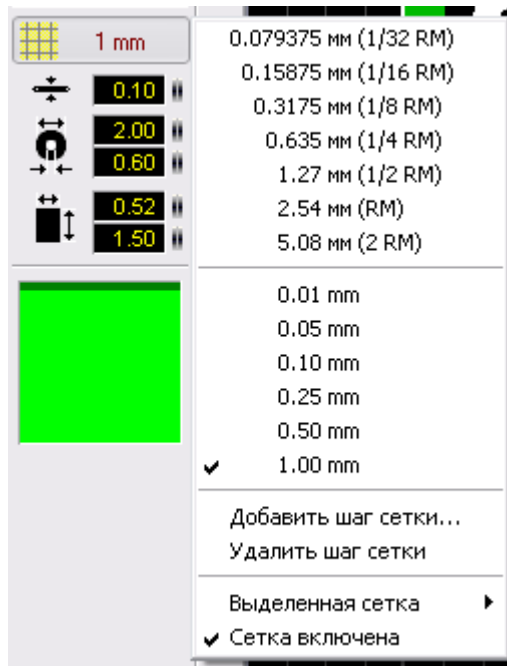
ФОТОВИД

- Сторона 1 = K1/I
- Сторона 2 = K2/B2 (зеркал)
- С компонентам
- Прозрачность



0,25 ,0,10 ,0,05 0,01

« 1 ,0,5 ,



1

Ctrl

-
-
-

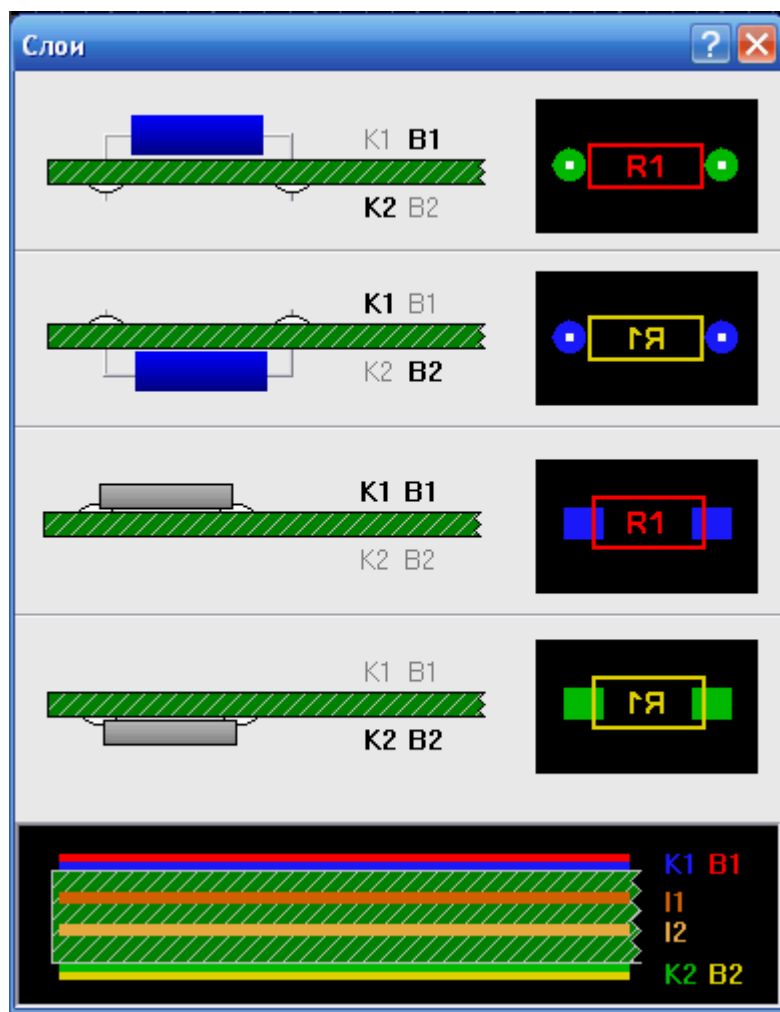
SMD

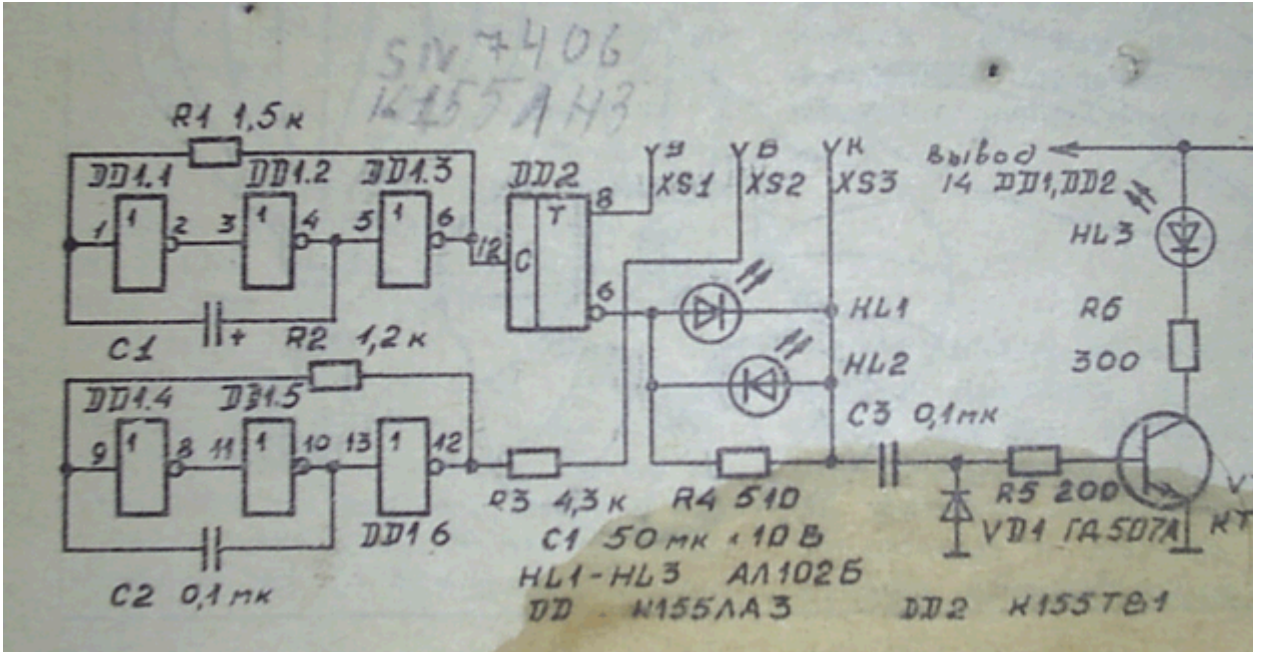


5

(! ...)

(“ ” ,) ,





-
-
-
-
-
-

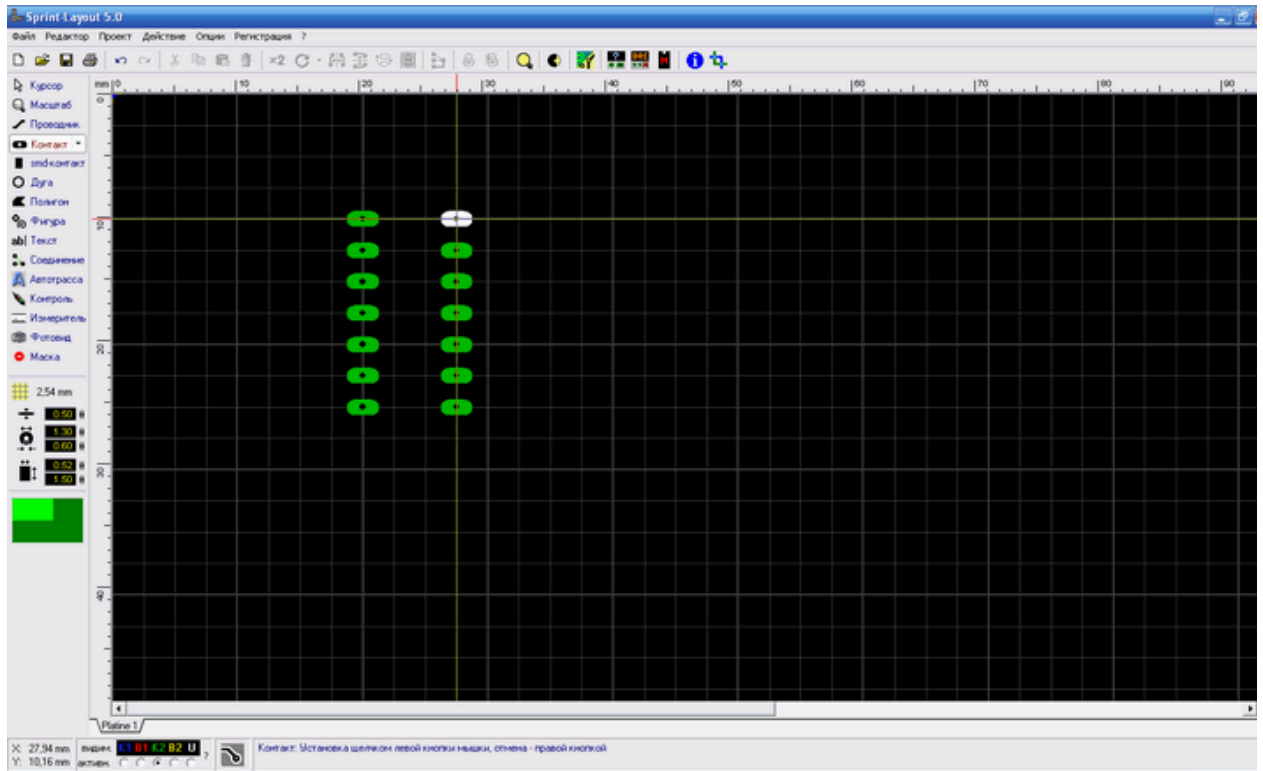
DIP

14

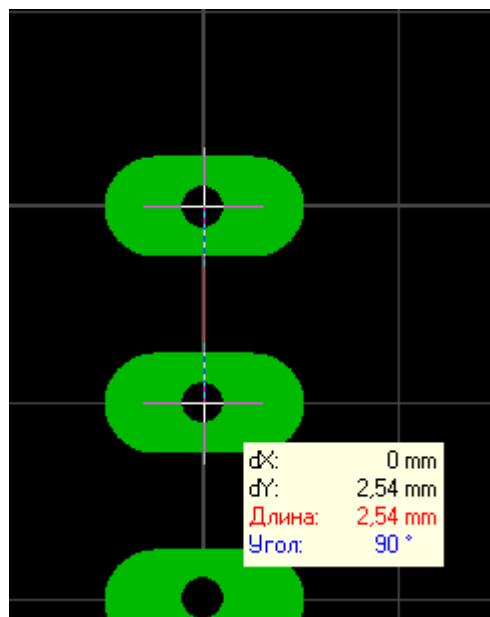


2,54 DIP , 7,62

1,3 « 2, »
0,5 , 2,54

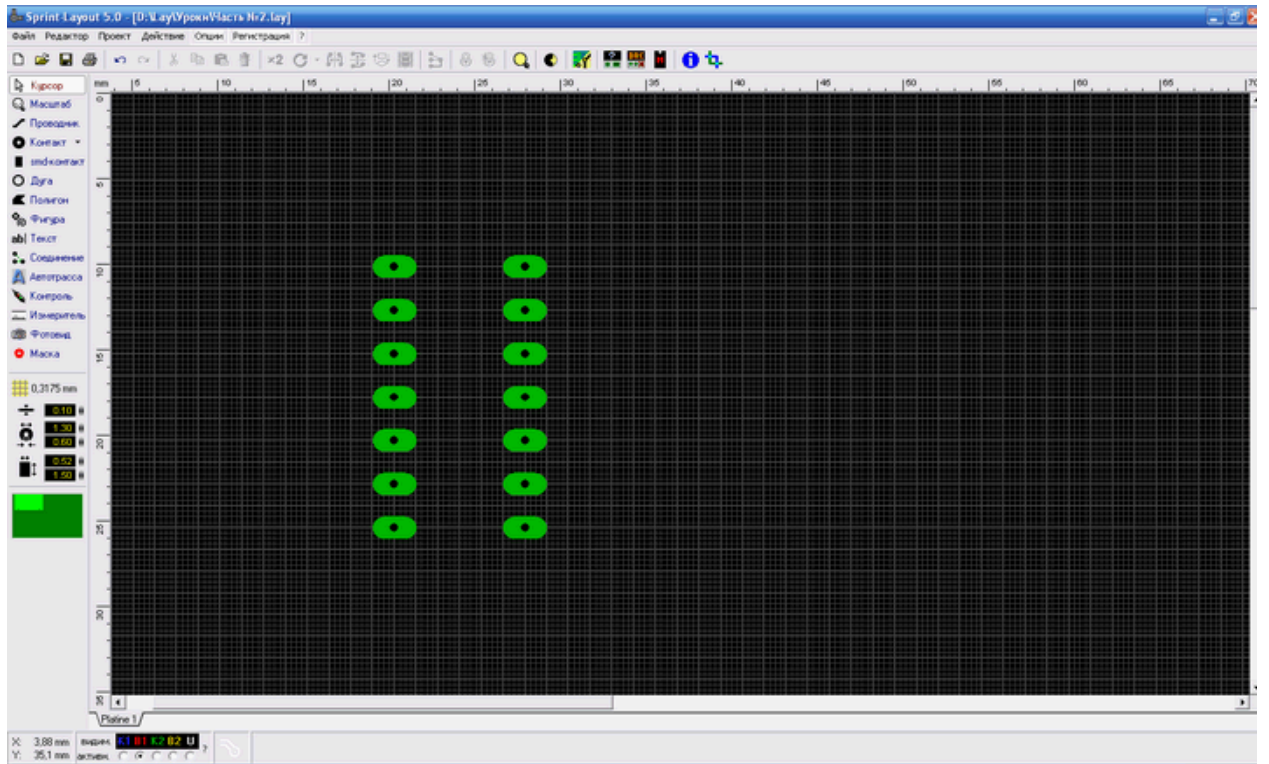


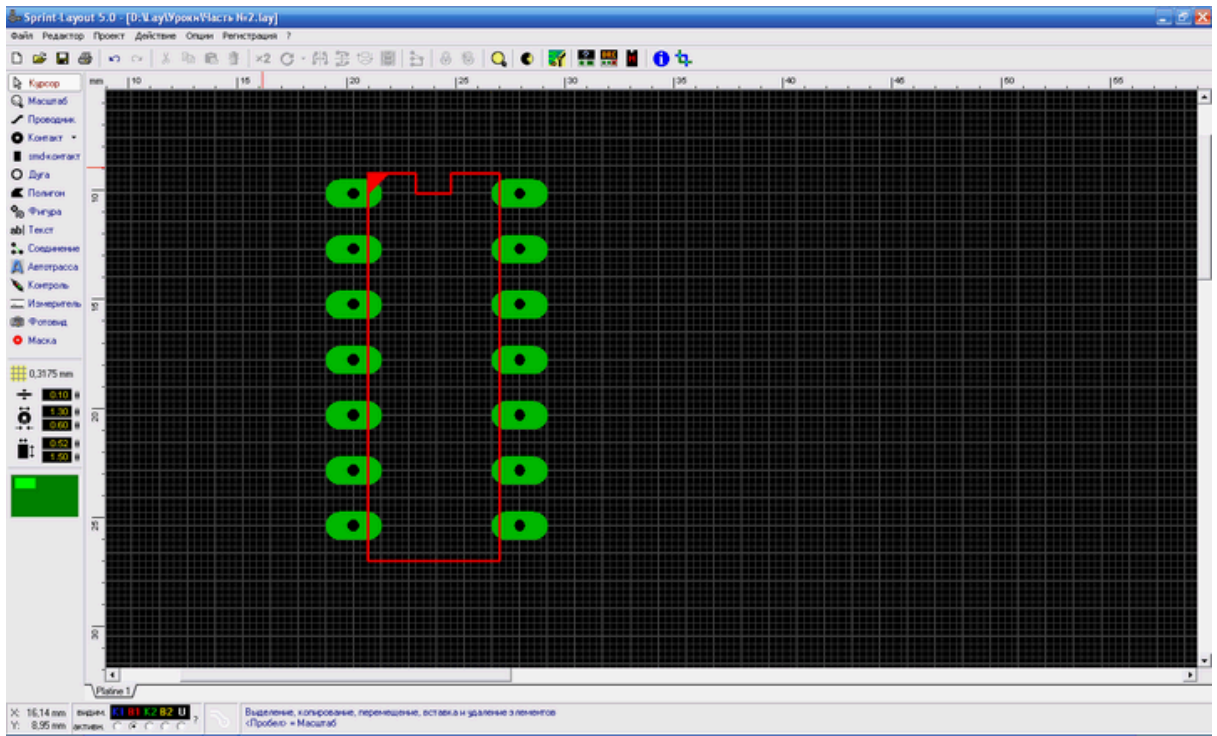
?



1. 0,3175

0,1





?

1, 1, 2, 2,U.

2

()

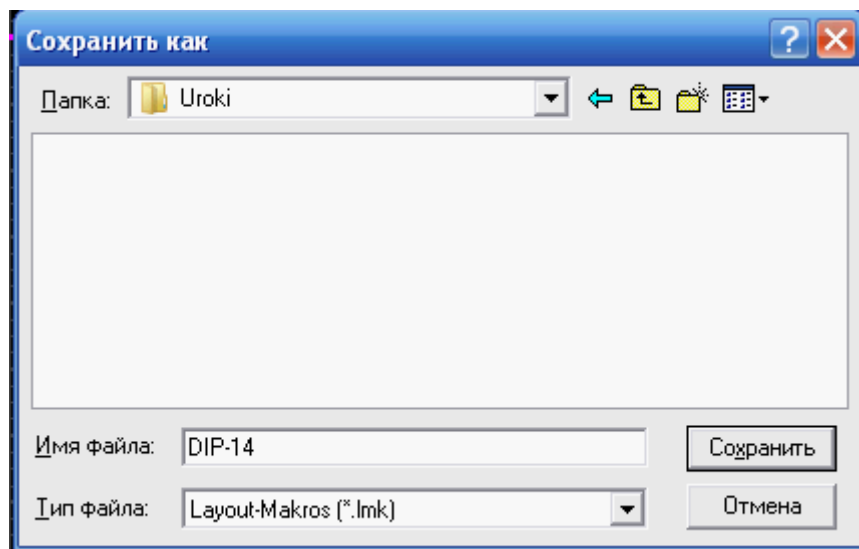
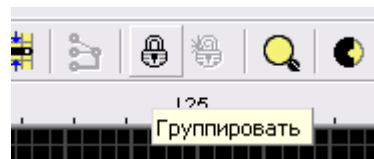
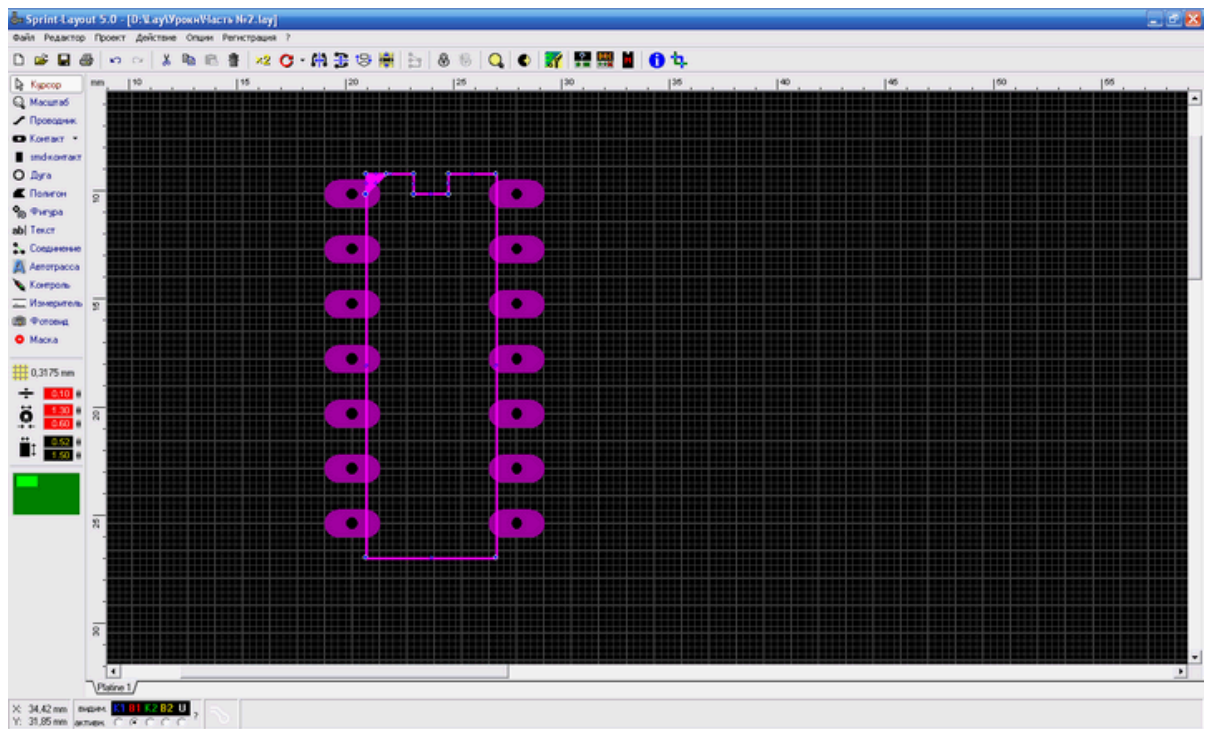
1

1
2
U

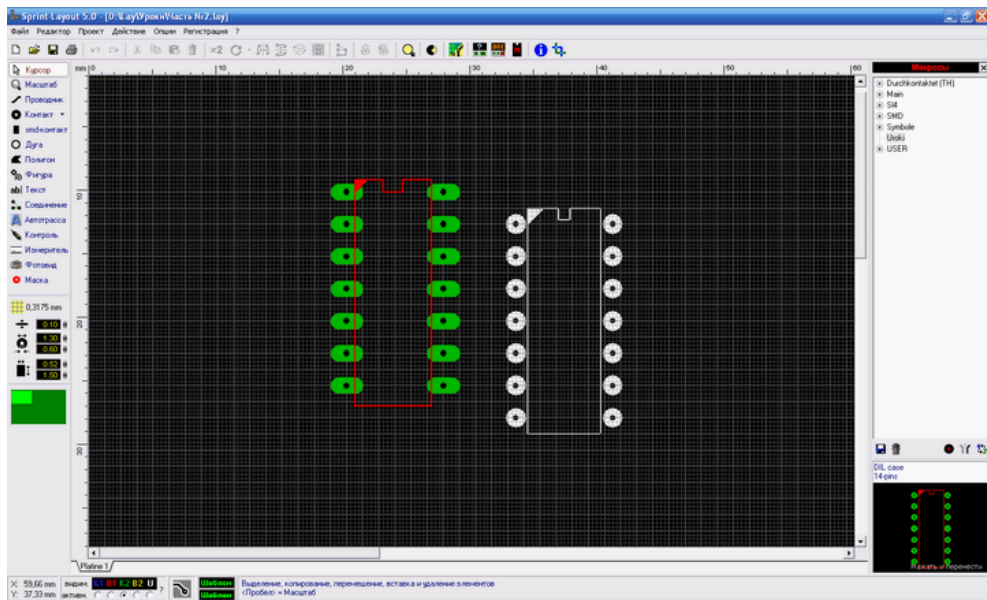
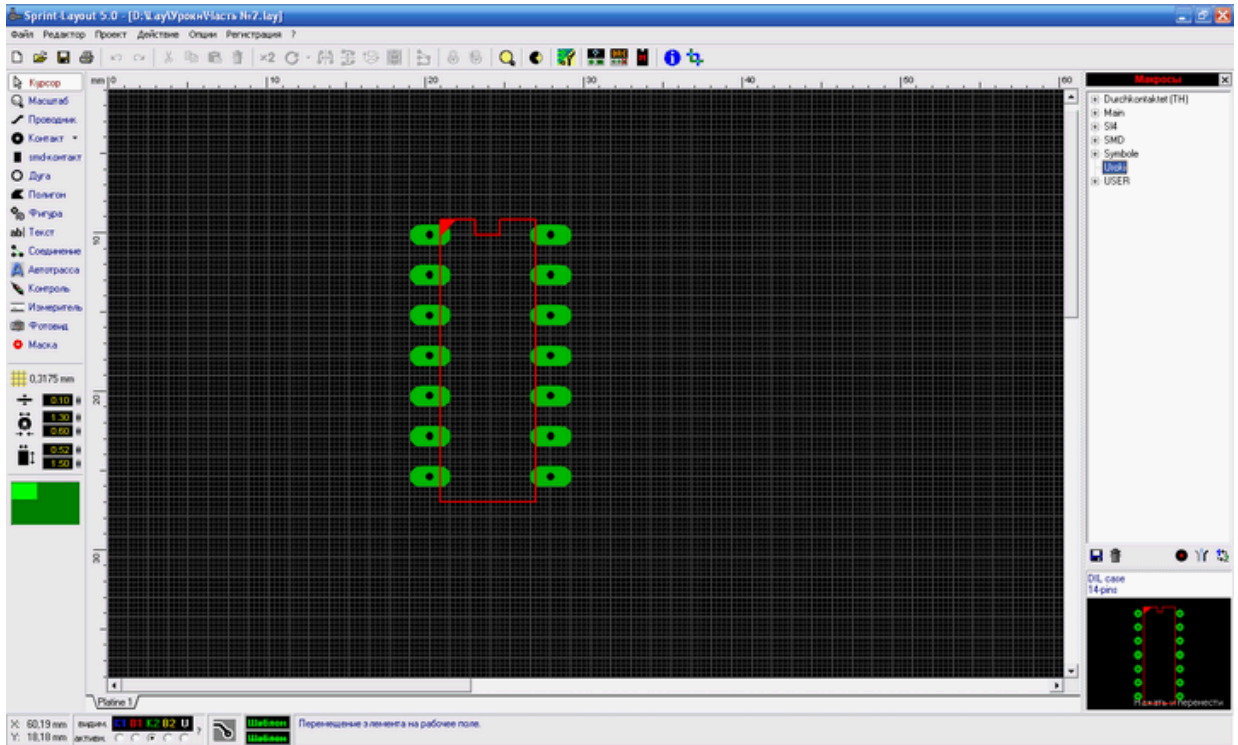
?

DIP-14

SL5



DIP-14.

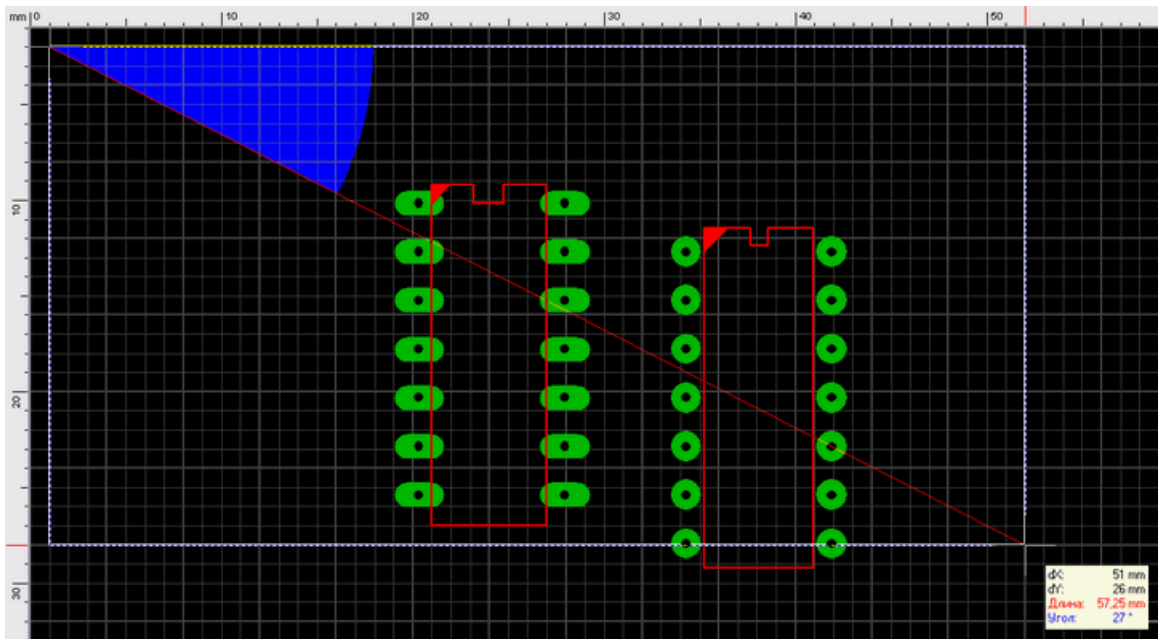




0,1

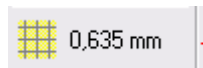


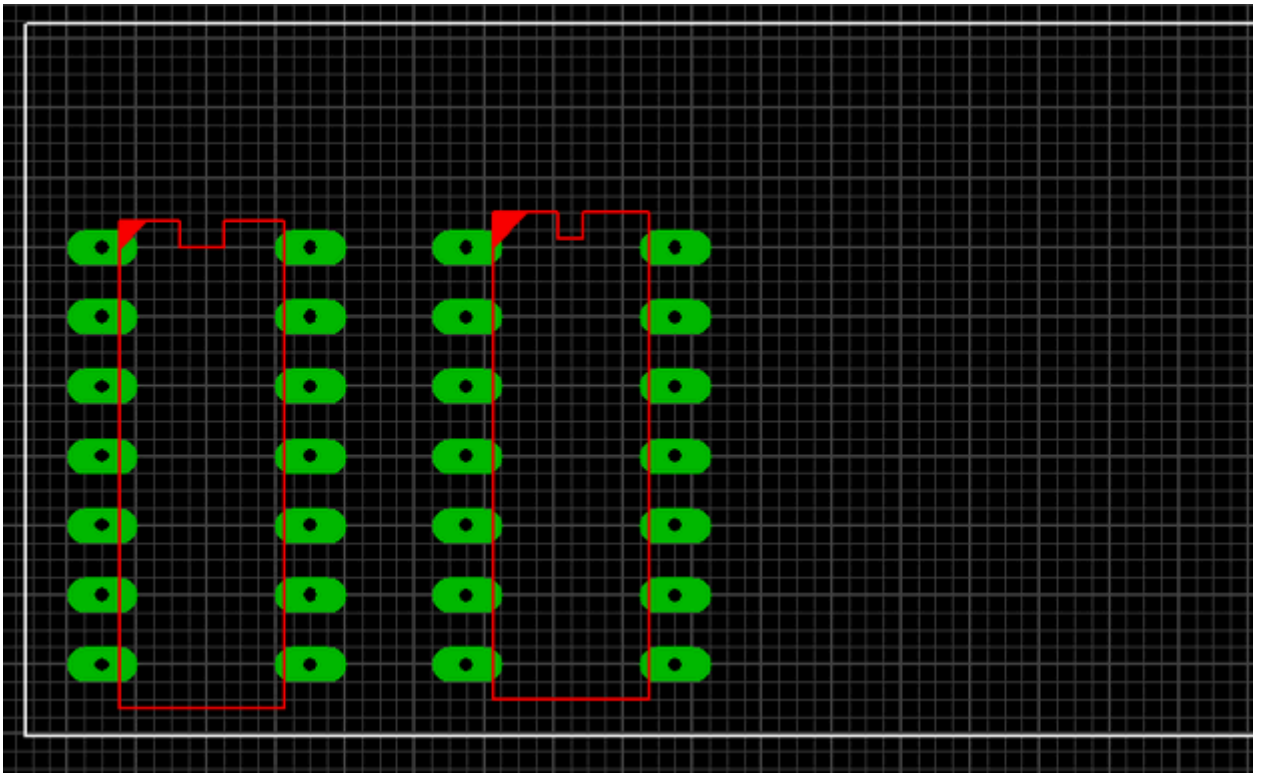
1



1

0,635





Контакт

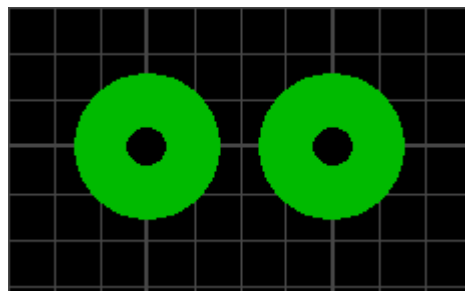
0,635

2

0,6



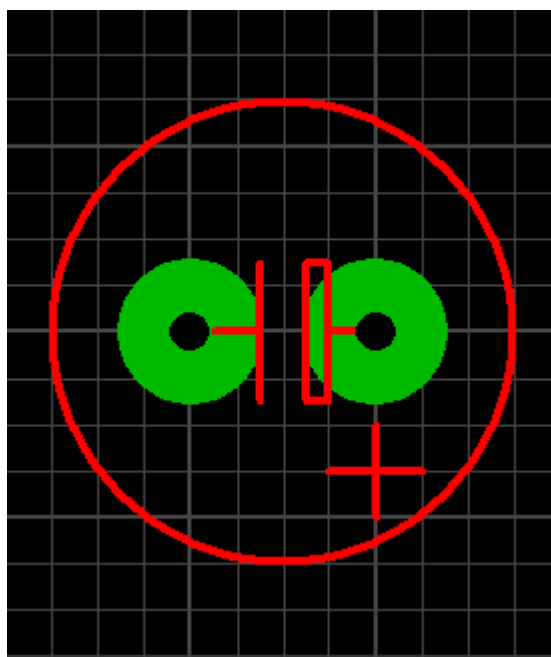
2,54



1.

ВИДИМ. K1 B1 K2 B2 U ?
АКТИВН.

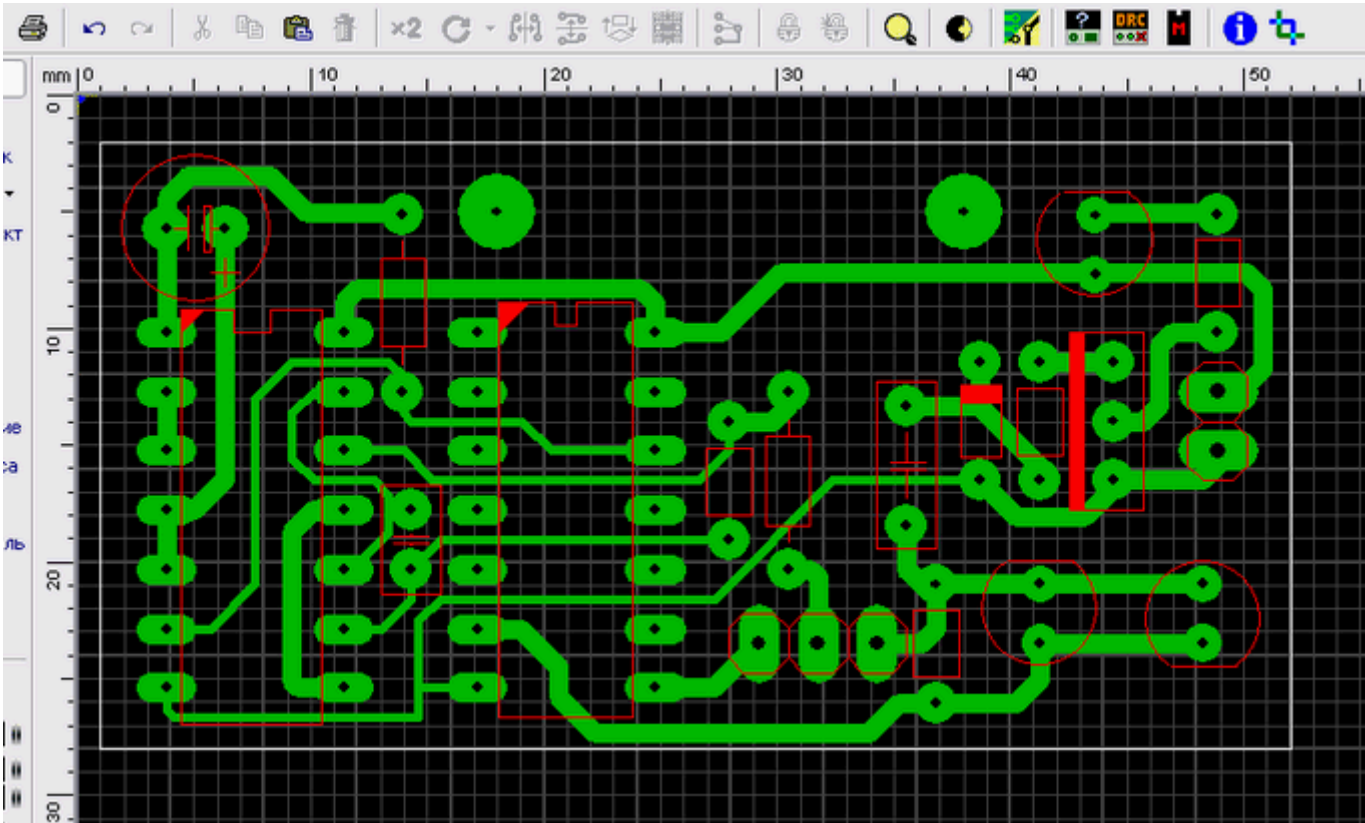
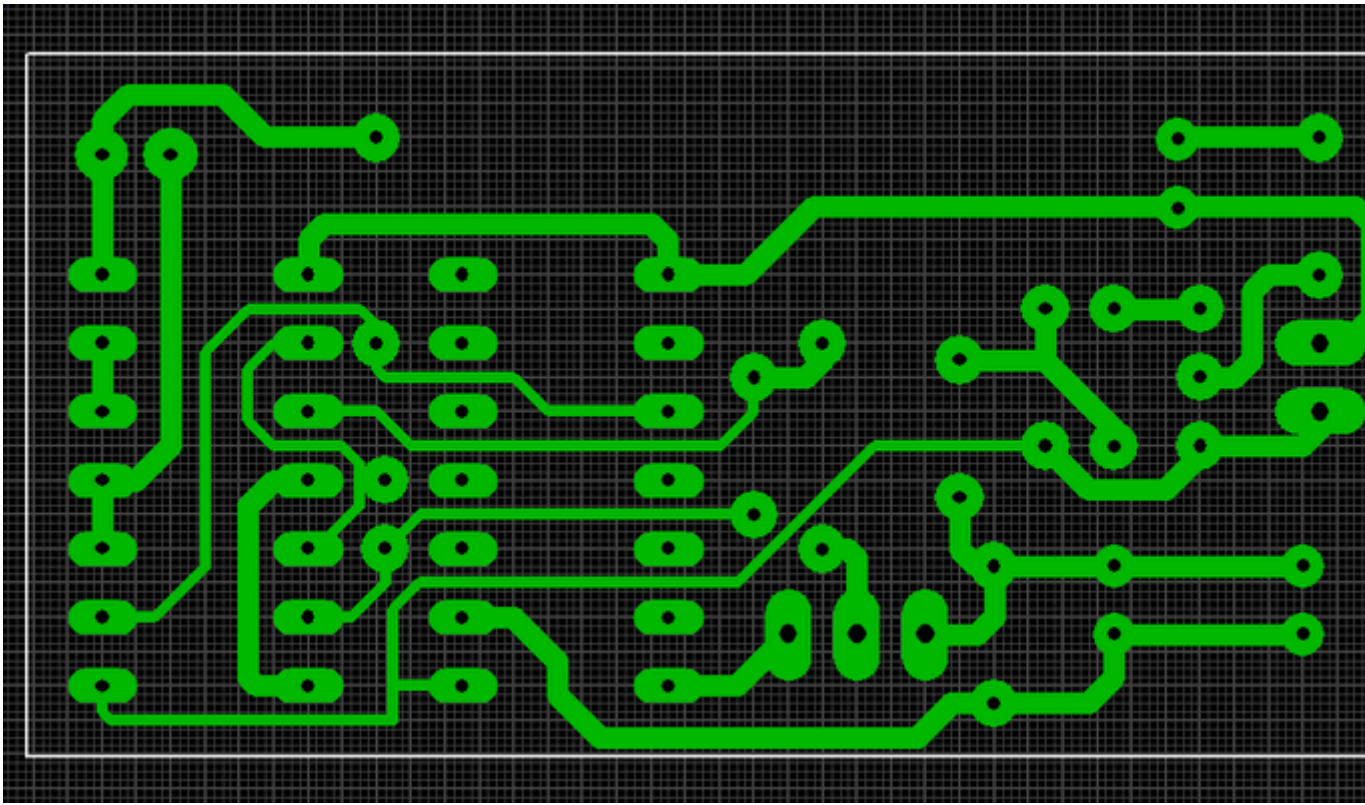
Дуга

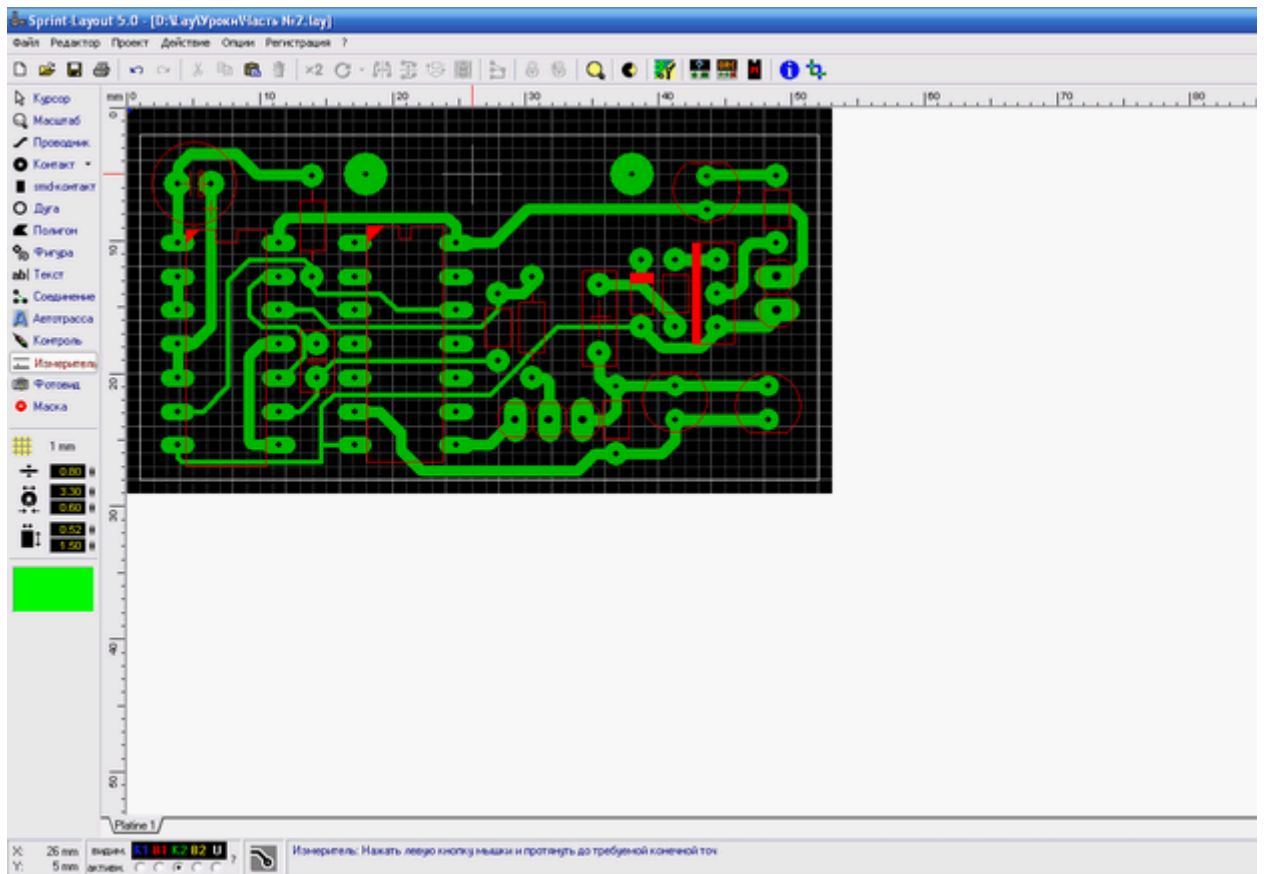


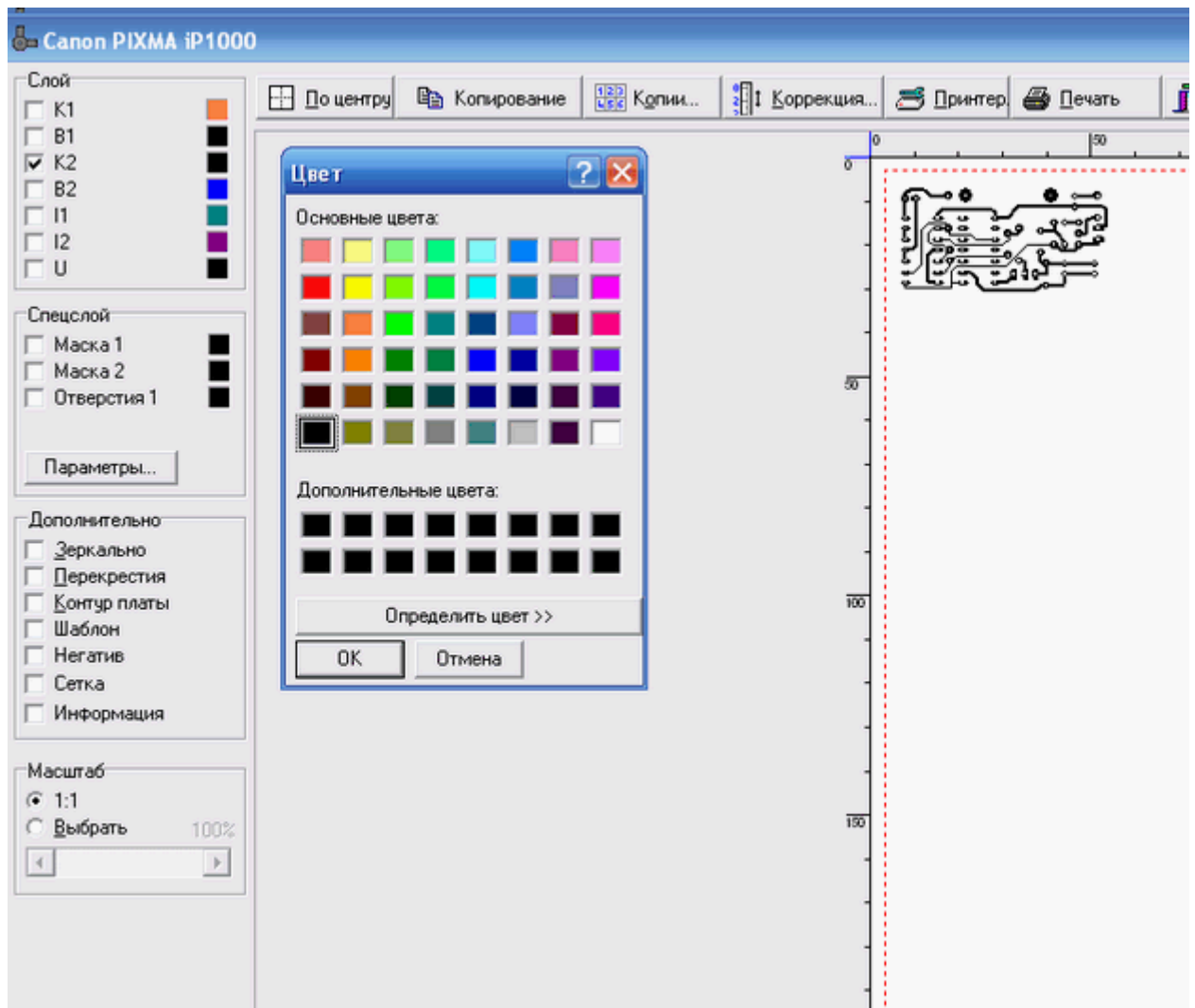
4,5 1

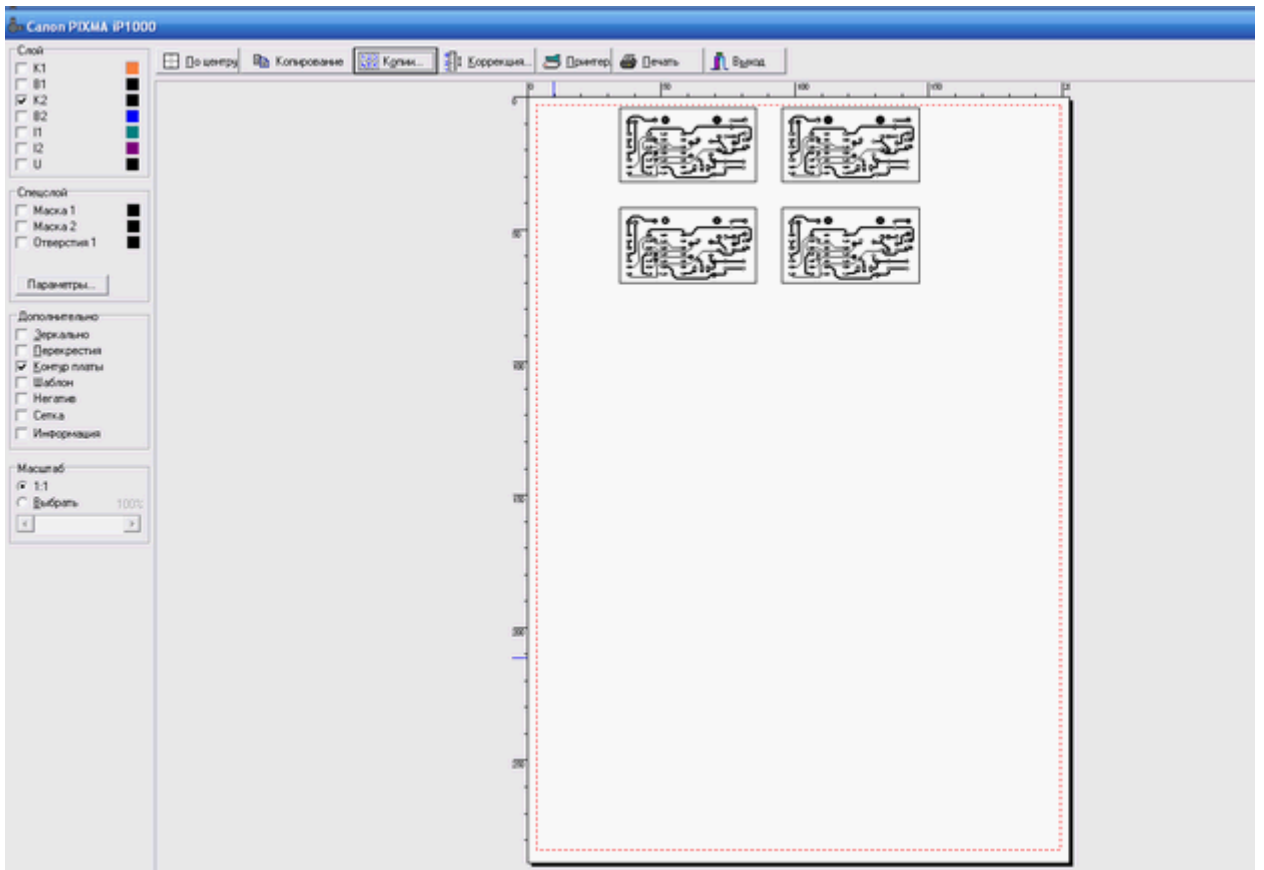
0,8

()









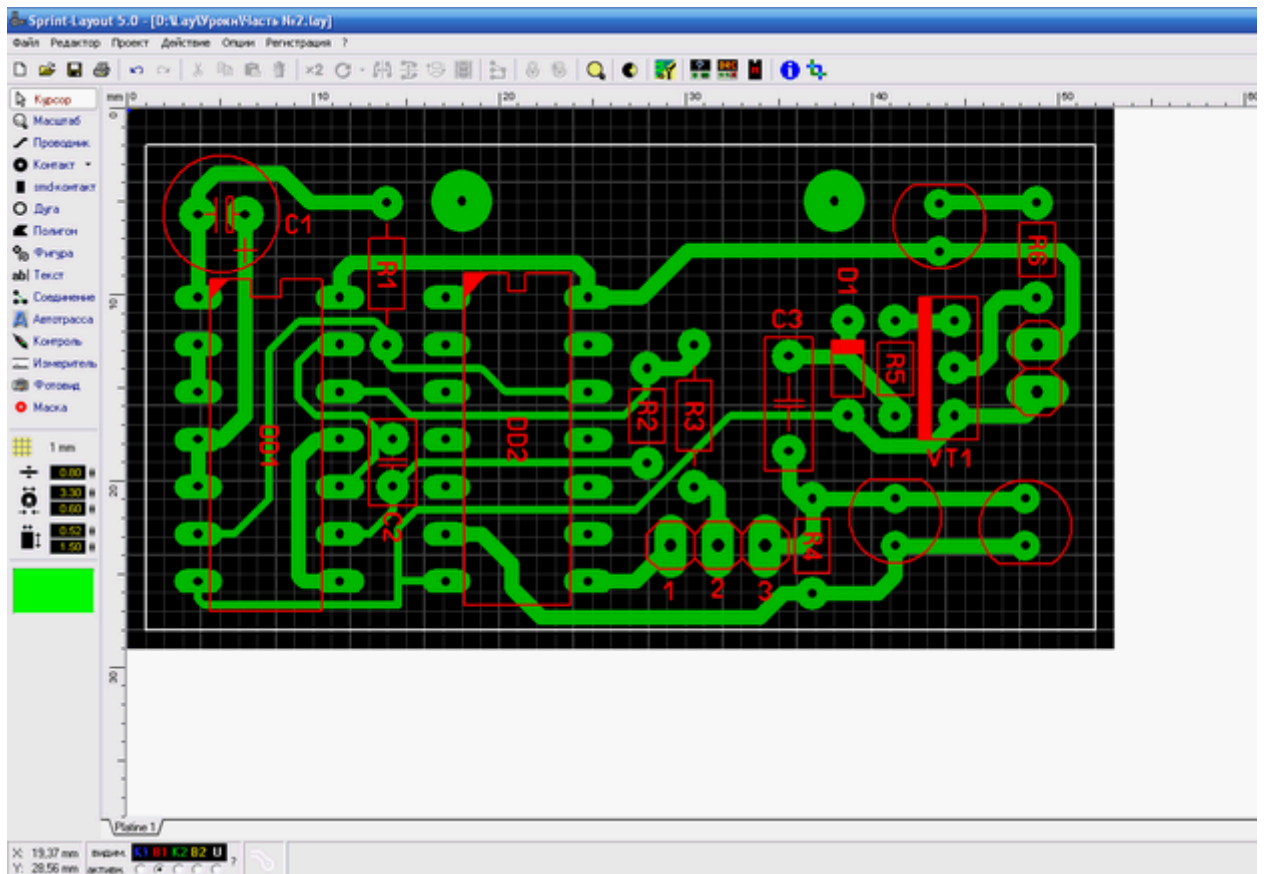
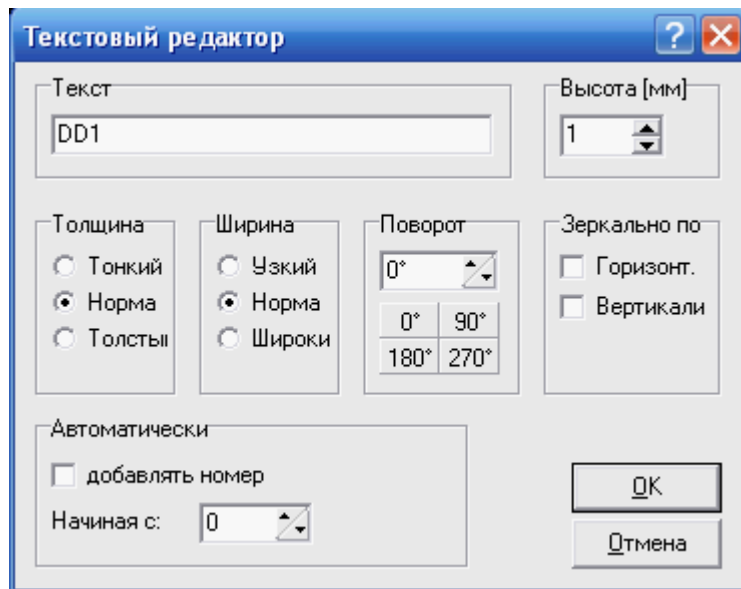
В1.

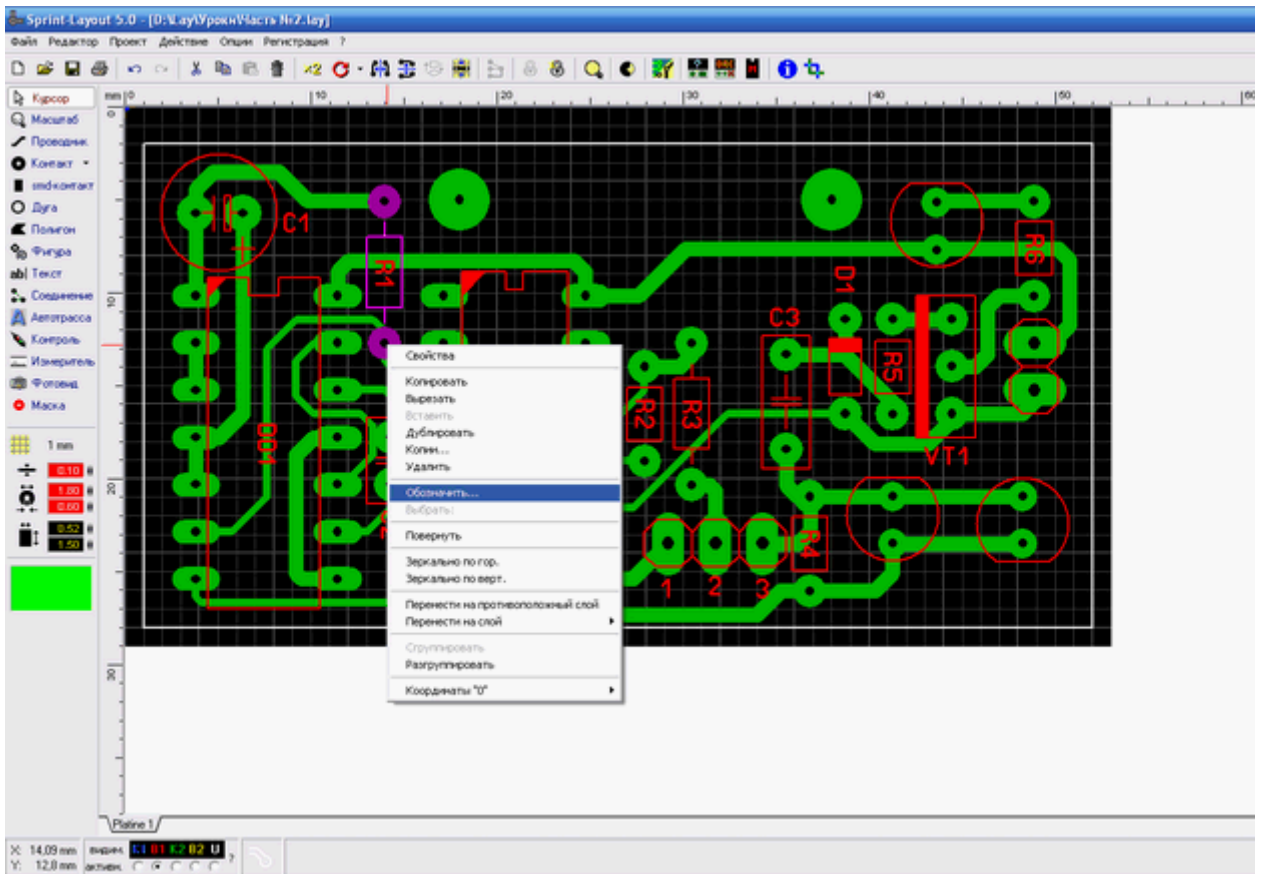


1.0

1,5

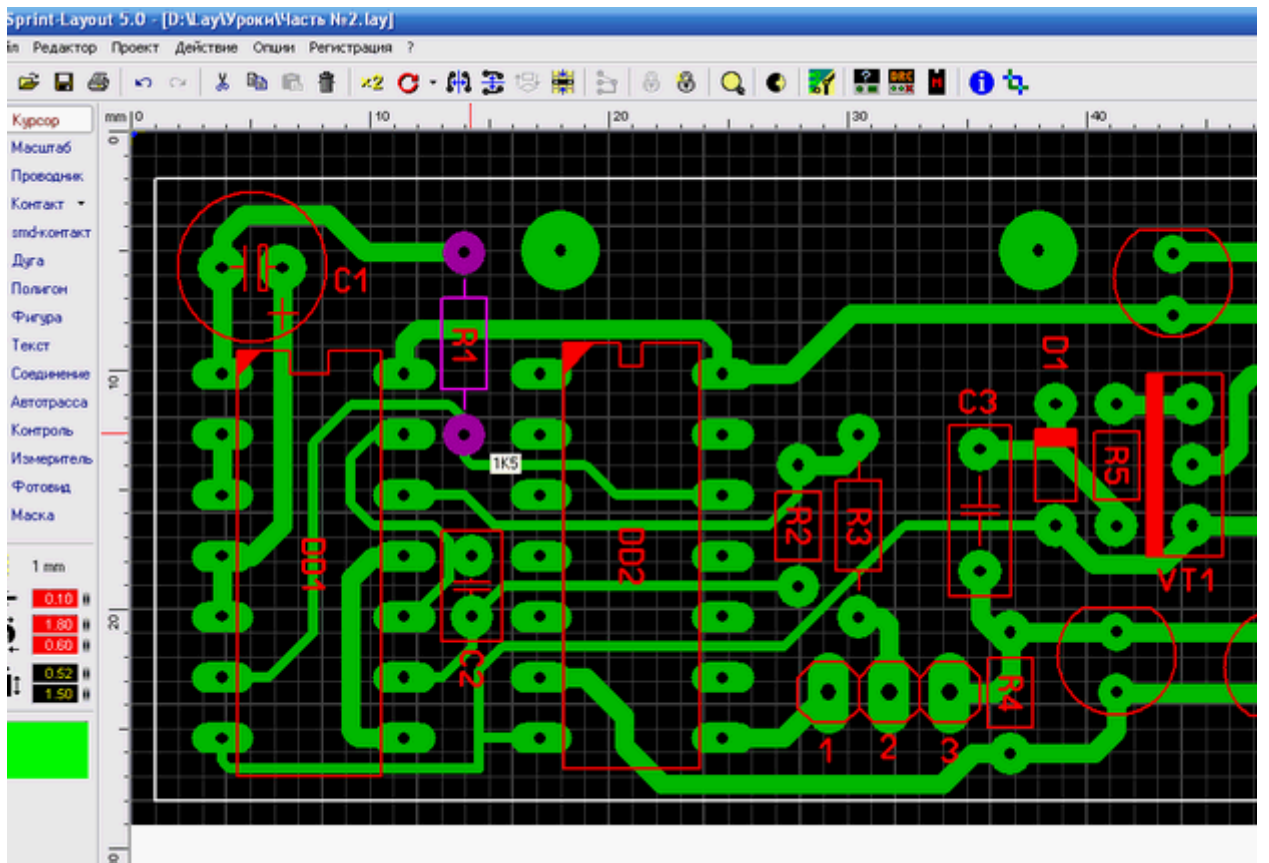
0,90,180, 270





R1

1,5
R1



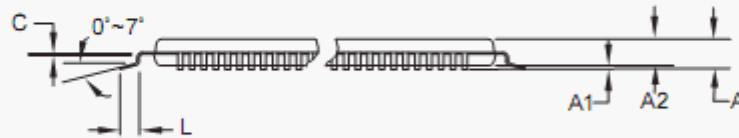
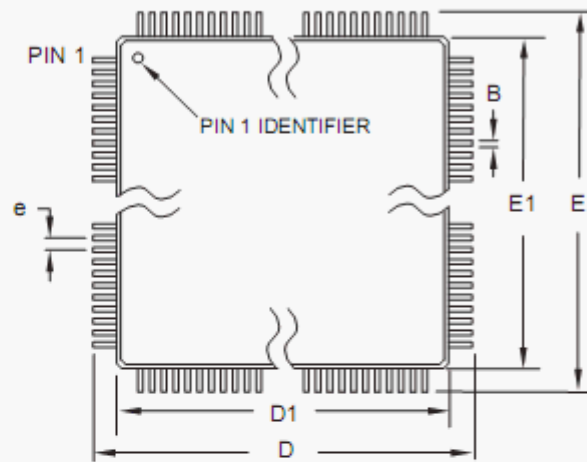
TQFP-32

TQFP-32



TQFP-32.

ATmega-8.



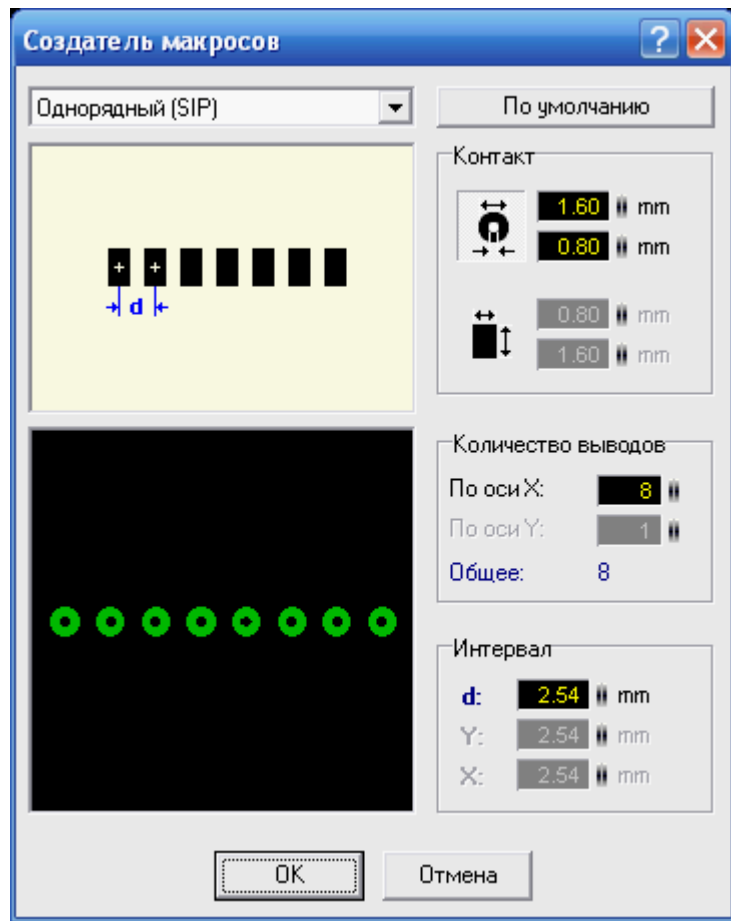
COMMON DIMENSIONS
(Unit of Measure = mm)

SYMBOL	MIN	NOM	MAX
A	-	-	1.20
A1	0.05	-	0.15
A2	0.95	1.00	1.05
D	8.75	9.00	9.25
D1	6.90	7.00	7.10
E	8.75	9.00	9.25
E1	6.90	7.00	7.10
B	0.30	-	0.45
C	0.09	-	0.20
L	0.45	-	0.75
e	0.80 TYP		

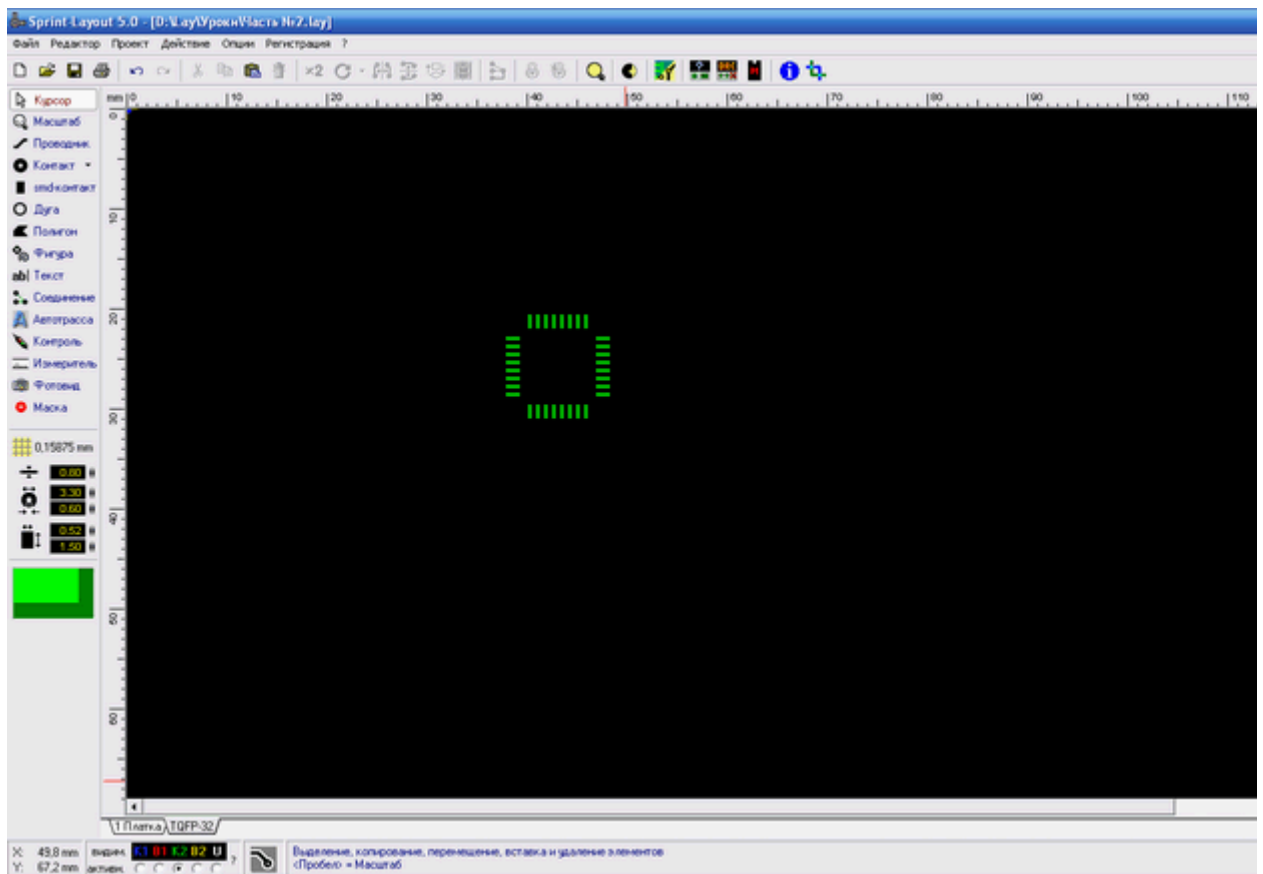
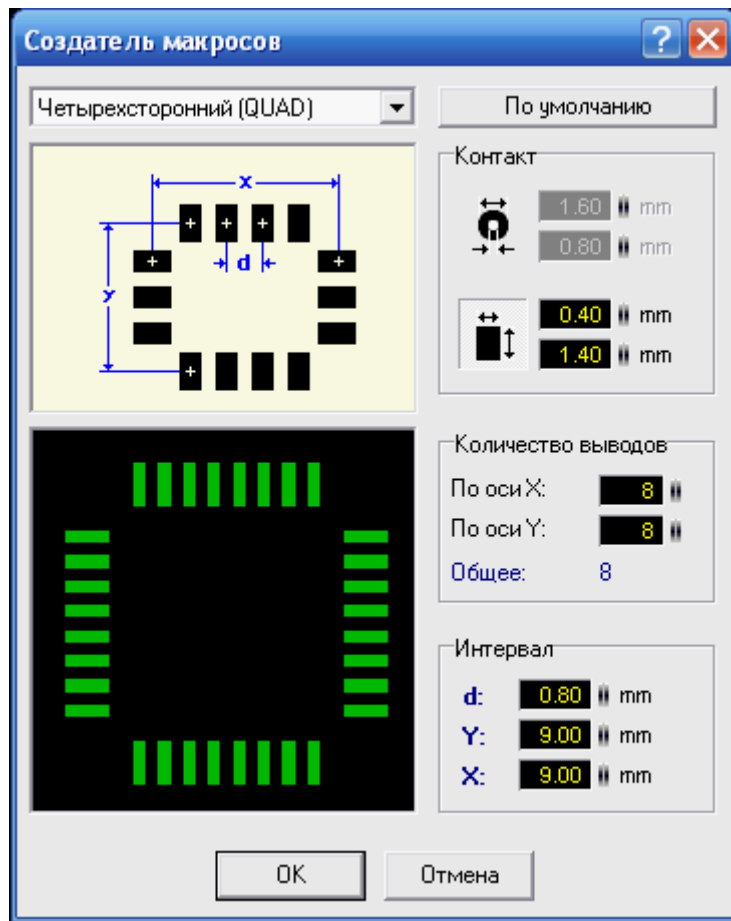
- Notes:
1. This package conforms to JEDEC reference MS-026, Variation ABA.
 2. Dimensions D1 and E1 do not include mold protrusion. Allowable protrusion is 0.25 mm per side. Dimensions D1 and E1 are maximum plastic body size dimensions including mold mismatch.
 3. Lead coplanarity is 0.10 mm maximum.

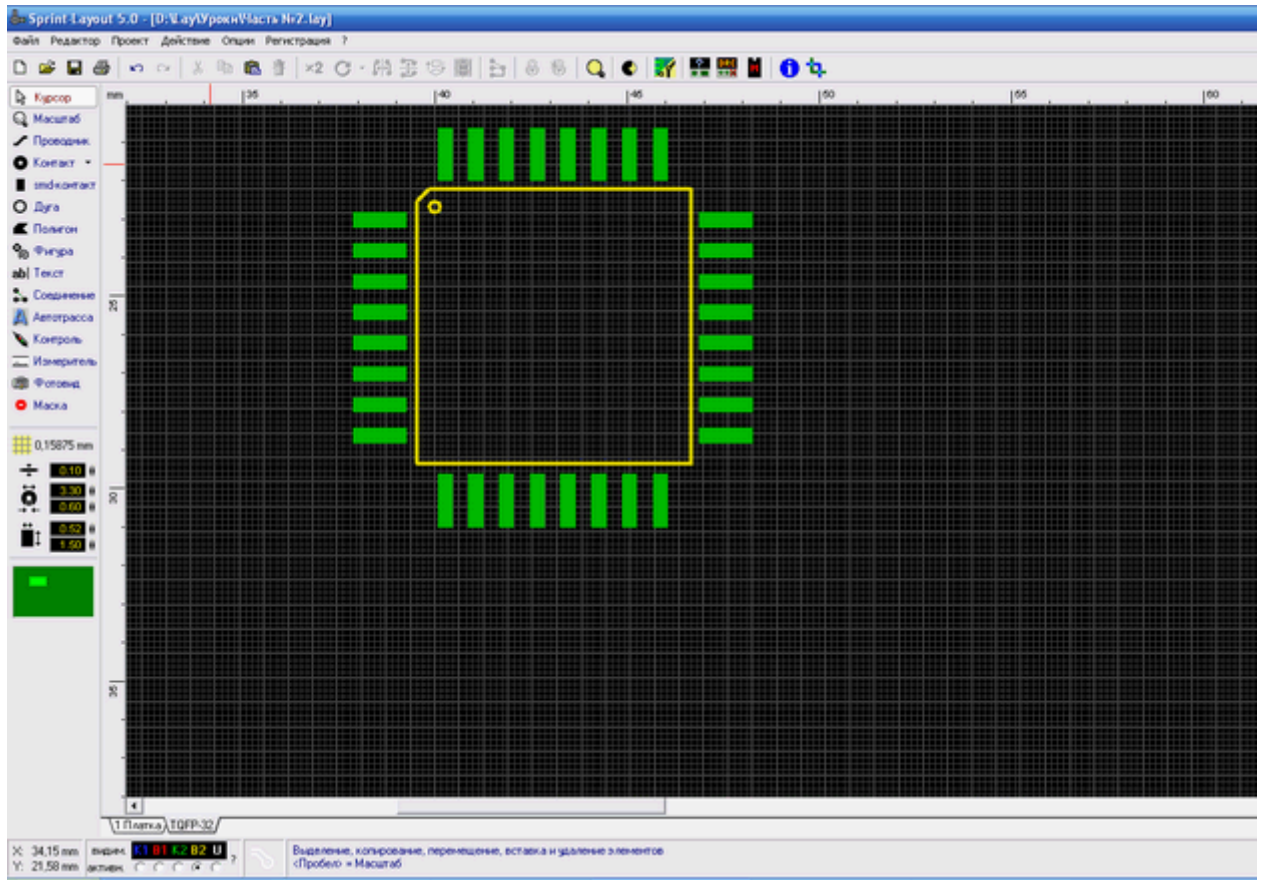
0,15785

->

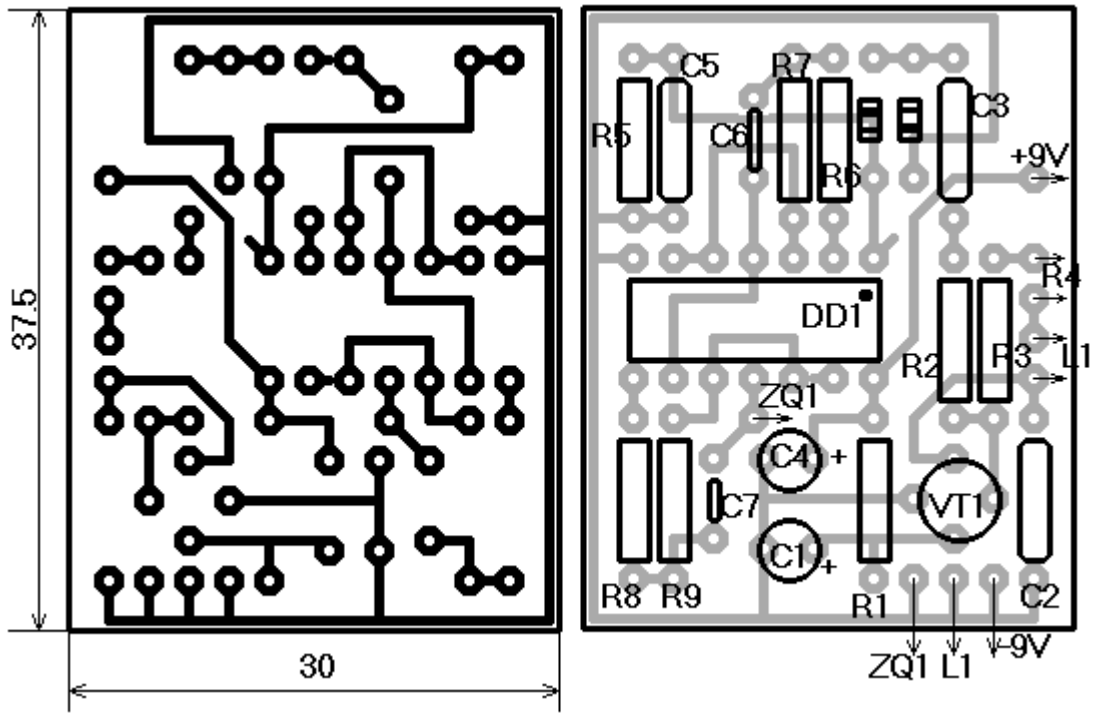


SMD.



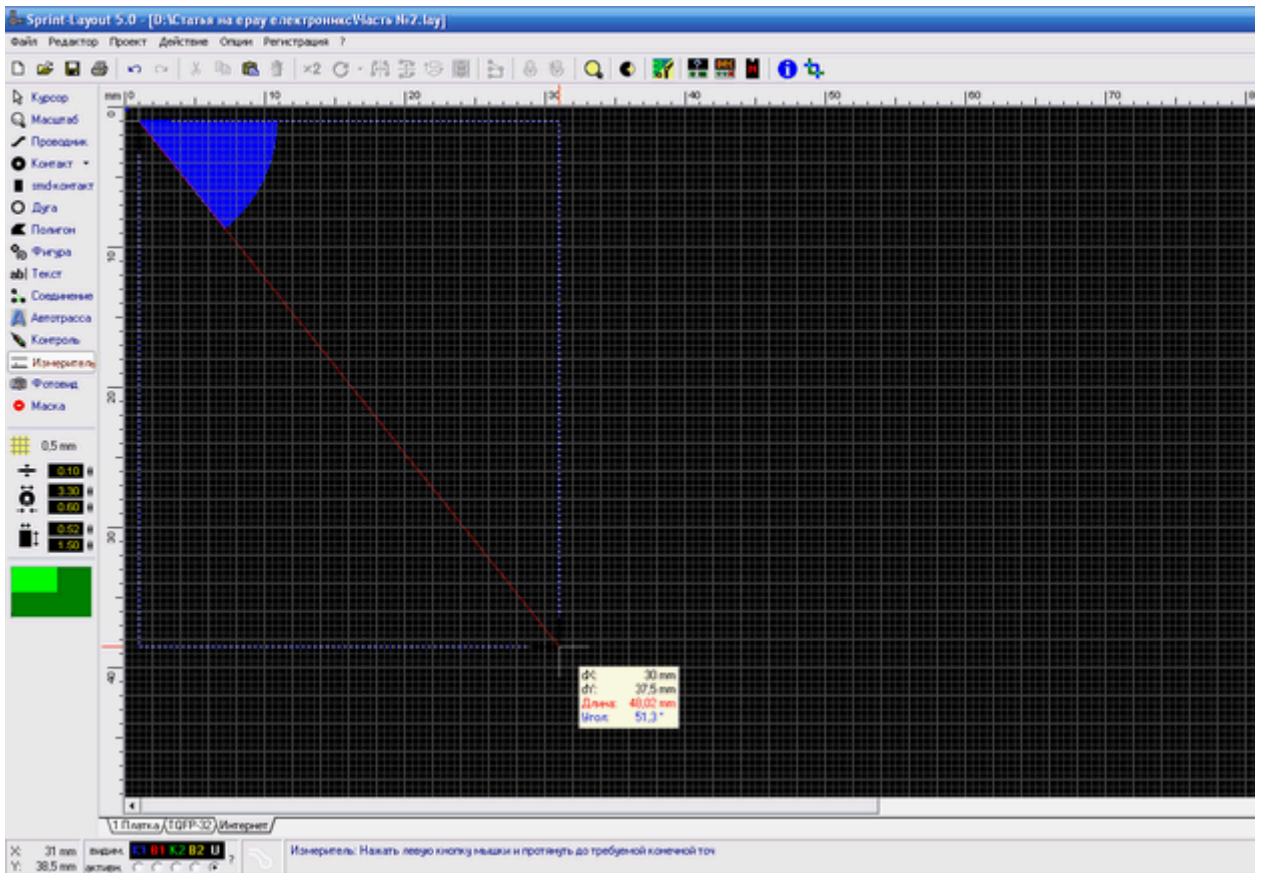


TQFP-32

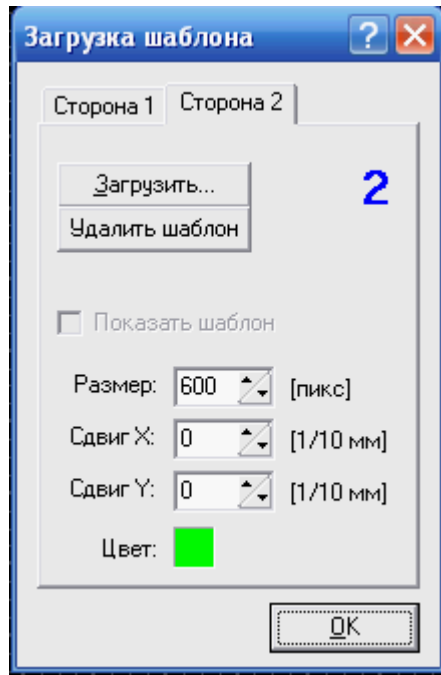
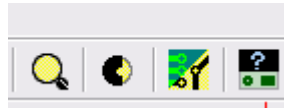


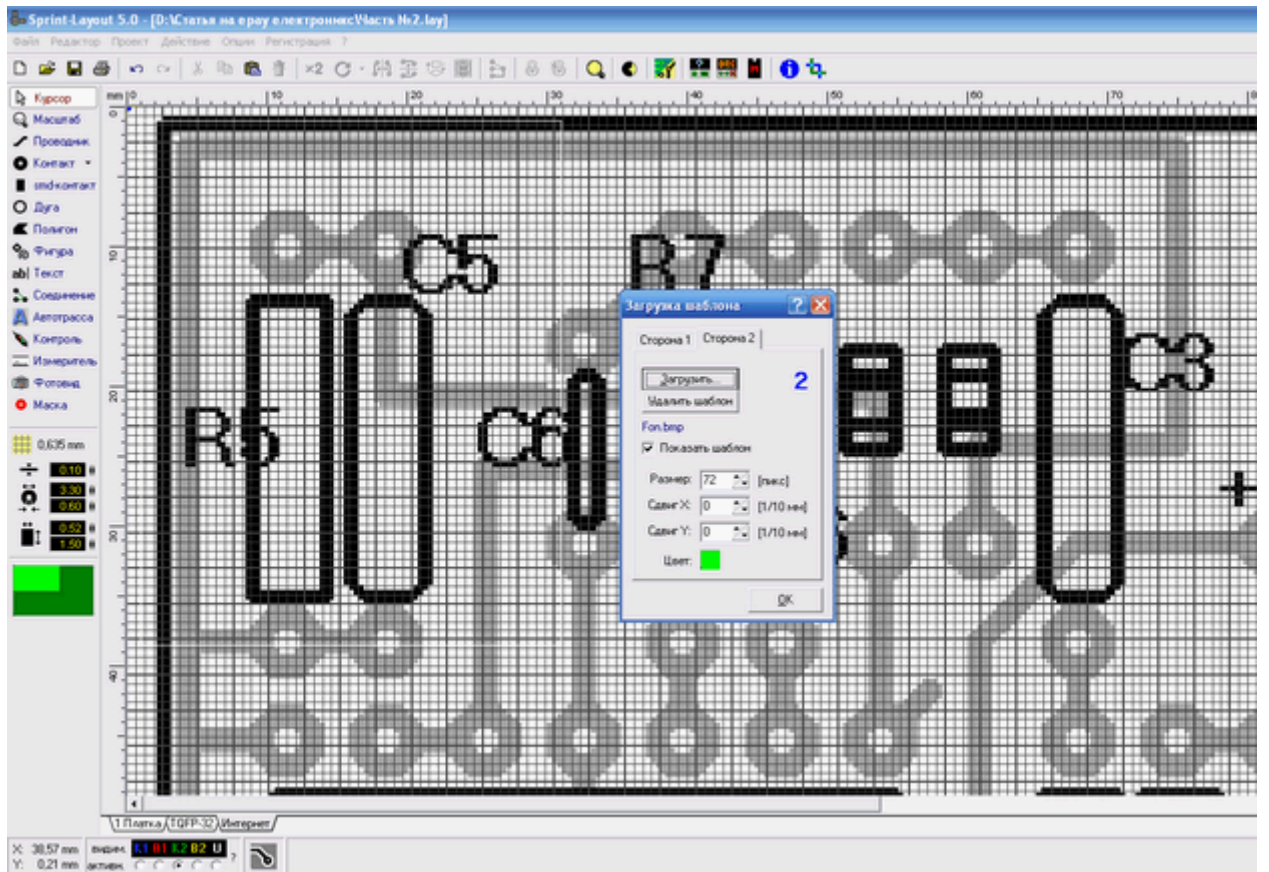
37,5 30 .

U.



600 dip
2



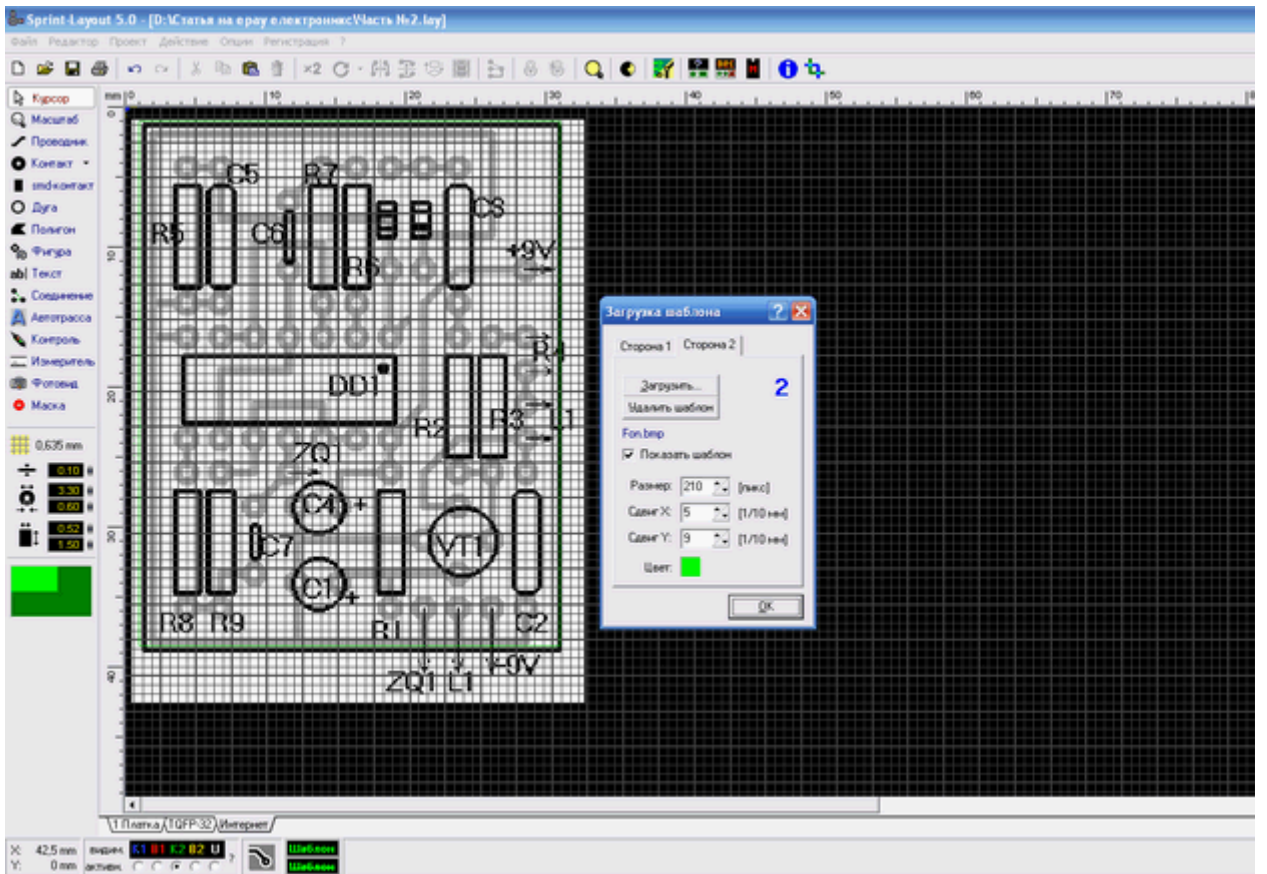


?

DIP

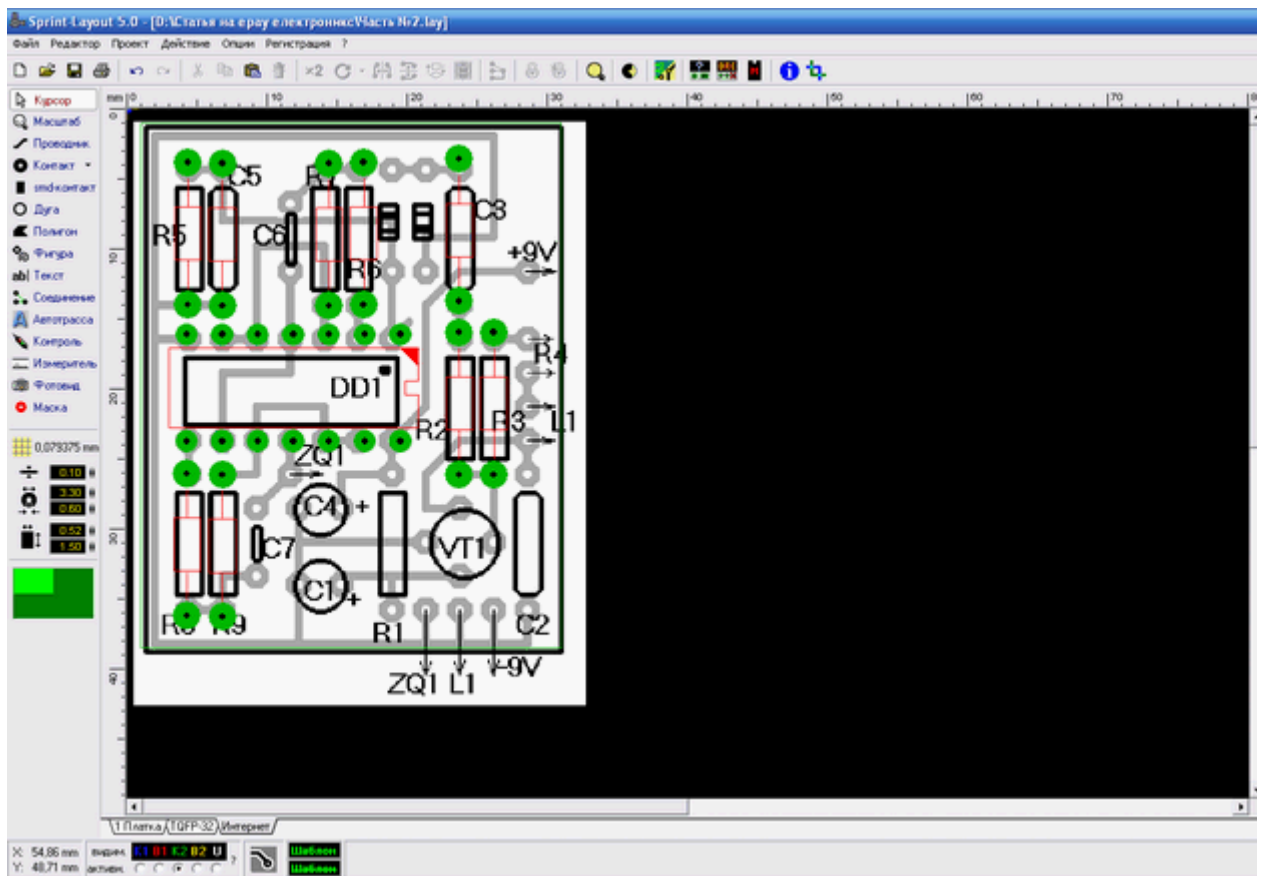
X,

Y



100%

Sprint-Layout



Sprint-Layout

Sprint-Layout,

!